



BRIAN SANDOVAL  
Governor

STATE OF NEVADA  
PUBLIC UTILITIES COMMISSION

ALAINA BURTENSHAW  
Chairman

REBECCA WAGNER  
Commissioner

DAVID NOBLE  
Commissioner

CRYSTAL JACKSON  
Executive Director

STATE

OCT 1 - 2012

REGULATORY AFFAIRS

September 27, 2012

Southwest Gas Corporation  
P O Box 98510  
Las Vegas, NV 89193

RE: Docket No.: 12-08029  
Southwest Gas Corporation filed Notice under Advice Letter No. 479 to adjust Northern and Southern Nevada Base Tariff Energy Rates and Deferred Energy Account Adjustment Rates effective October 1, 2012.

To Whom It May Concern:

With reference to the above-captioned docket, enclosed are copies of the tariff pages which were accepted for filing by the Public Utilities Commission of Nevada effective October 1, 2012.

Sincerely,

  
Mary L. Thompson  
Administrative Assistant III

Enclosure(s)

cc: PUC Master File

**STATEMENT OF RATES**  
**EFFECTIVE RATES APPLICABLE TO SOUTHERN NEVADA SCHEDULES <sup>1/2/</sup>**

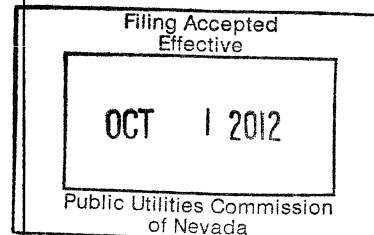
Schedule Number	Type of Charge	Delivery Charge <sup>3/</sup>	Gas Cost		Currently Effective Tariff Rate
			Base Tariff Energy Rate <sup>4/</sup>	Deferred Energy Account Adjustment	
<u>SG-RS</u>	<u>Single-Family Residential Gas Service</u>				
	Basic Service Charge per Month	\$ 9.00			\$ 9.00
	Commodity Charge per Therm:				
	All Usage	\$ .32828	\$ .43735	(\$ .10997)	\$ .65566
<u>SG-RM</u>	<u>Multi-Family Residential Gas Service</u>				
	Basic Service Charge per Month	\$ 9.00			\$ 9.00
	Commodity Charge per Therm:				
	All Usage	\$ .23038	\$ .43735	(\$ .10997)	\$ .55776
<u>SG-G(S)</u>	<u>Small General Gas Service</u>				
	Basic Service Charge per Month	\$ 21.50			\$ 21.50
	Commodity Charge per Therm:				
	All Usage	\$ .43750	\$ .43735	(\$ .10997)	\$ .76488
<u>SG-G(M)</u>	<u>Medium General Gas Service</u>				
	Basic Service Charge per Month	\$ 25.00			\$ 25.00
	Commodity Charge per Therm:				
	All Usage	\$ .14324	\$ .43735	(\$ .10997)	\$ .47062
<u>SG-G(L)</u>	<u>Large General Gas Service</u>				
	Basic Service Charge per Month	\$ 150.00			\$ 150.00
	Commodity Charge per Therm:				
	All Usage	\$ .18479	\$ .43735	(\$ .10997)	\$ .51217
<u>SG-G(TE)</u>	<u>Transportation Eligible Gas Service</u>				
	Basic Service Charge per Month	\$ 950.00			\$ 950.00
	Commodity Charge per Therm:				
	All Usage	\$ .03746	\$ .43735	(\$ .10997)	\$ .36484
	Demand Charge <sup>5/</sup>	\$ .035240			\$ .035240
<u>SG-AC</u>	<u>Air-Conditioning Gas Service</u>				
	Basic Service Charge per Month	\$ 21.50			\$ 21.50
	Commodity Charge per Therm:				
	All Usage	\$ .12146	\$ .43735	(\$ .10997)	\$ .44884
<u>SG-WP</u>	<u>Water Pumping Gas Service</u>				
	Basic Service Charge per Month	\$ 50.00			\$ 50.00
	Commodity Charge per Therm:				
	All Usage	\$ .03567	\$ .43735	(\$ .10997)	\$ .36305

Issued:  
September 20, 2012

Effective:  
October 1, 2012

Advice Letter No.:  
479

Issued by  
John P. Hester  
Senior Vice President



**STATEMENT OF RATES**  
**EFFECTIVE RATES APPLICABLE TO SOUTHERN NEVADA SCHEDULES <sup>1/2/</sup>**

Schedule Number	Type of Charge	Delivery Charge <sup>3/</sup>	Gas Cost		Currently Effective Tariff Rate
			Base Tariff Energy Rate <sup>4/</sup>	Deferred Energy Account Adjustment	
<b>SG-EG</b>	<b>Small Electric Generation Gas Service</b>				
	Basic Service Charge per Month	\$ 21.50			\$ 21.50
	Commodity Charge per Therm:				
	All Usage	\$ .07357	\$ .43735	(\$ .10997)	\$ .40095
<b>SG-CNG</b>	<b>Gas Service for Compression on Customer's Premises <sup>6/</sup></b>				
	Basic Service Charge per Month	\$ 21.50			\$ 21.50
	Commodity Charge per Therm:				
	All Usage	\$ .09112	\$ .43735	(\$ .10997)	\$ .41850
<b>SG-L</b>	<b>Street and Outdoor Lighting Gas Service</b>				
	Commodity Charge per Therm:				
	All Usage	\$ .32310	\$ .43735	(\$ .10997)	\$ .65048
<b>SG-OS</b>	<b>Optional Gas Service</b>	As specified on Sheet Nos. 48 through 51.			
<b>SG-AS</b>	<b>Alternative Sales Service</b>	As specified on Sheet Nos. 52 through 53.			

<sup>1/</sup> The charges shown above are subject to adjustments for taxes and assessments.

<sup>2/</sup> Customers taking transportation service will pay the Basic Service Charge, the Delivery Charge per therm, and Demand Charge, if applicable, of the Currently Effective Tariff Rate for each meter included in the transportation service agreement, plus an amount for distribution system shrinkage for all volumes of gas not delivered through a direct connection to one of the Company's upstream interstate pipelines. The high pressure shrinkage rate is \$.00011 per therm, and the low pressure shrinkage rate is \$.00279 per therm. In addition, the customer will also pay a Transportation Service Charge of \$500.00 per month per individually qualifying premise. For purposes of calculating Payment for Excess Imbalances, the Imbalance Commodity Charge is \$.47725 per therm and the Imbalance Reservation Charge is \$.09275 per therm. For customers converting from sales service, an additional amount equal to the currently effective Deferred Energy Accounting Adjustment will be assessed for a period of twelve (12) months.

<sup>3/</sup> Includes the following:

Component/Schedule	SG-RS	SG-RM	SG-G(S)	SG-G(M)	SG-G(L)
Margin	.31590	.24811	.35336	.14823	.18864
Accumulated Deferred Interest Rate Adjustment	(.00229)	(.00229)	(.00229)	(.00229)	(.00229)
General Revenues Adjustment	.01467	(.01544)	.08643	(.00270)	(.00156)
Total	.32828	.23038	.43750	.14324	.18479

Component/Schedule	SG-G(TE)	SG-AC	SG-WP	SG-EG	SG-CNG	SG-L
Margin	.03975	.12375	.03796	.07586	.09341	.32539
Accumulated Deferred Interest Rate Adjustment	(.00229)	(.00229)	(.00229)	(.00229)	(.00229)	(.00229)
General Revenues Adjustment	.00000	.00000	.00000	.00000	.00000	.00000
Total	.03746	.12146	.03567	.07357	.09112	.32310

Issued:  
**August 31, 2012**

Effective:  
**October 1, 2012**

Advice Letter No.:  
**479**

Issued by  
**John P. Hester**  
Senior Vice President

Filing Accepted  
Effective

**OCT 1 2012**

Public Utilities Commission  
of Nevada

**STATEMENT OF RATES**  
**EFFECTIVE RATES APPLICABLE TO NORTHERN NEVADA SCHEDULES <sup>1/2/</sup>**

Schedule Number	Type of Charge	Delivery Charge <sup>3/</sup>	Gas Cost		Currently Effective Tariff Rate
			Base Tariff Energy Rate <sup>4/</sup>	Deferred Energy Account Adjustment	
<u>NG-RS</u>	<u>Single-Family Residential Gas Service</u>				
	Basic Service Charge per Month	\$ 9.00			\$ 9.00
	Commodity Charge per Therm:				
	All Usage	\$ .31007	\$ .63477	(\$ .14825)	\$ .79659
<u>NG-RM</u>	<u>Multi-Family Residential Gas Service</u>				
	Basic Service Charge per Month	\$ 9.00			\$ 9.00
	Commodity Charge per Therm:				
	All Usage	\$ .25882	\$ .63477	(\$ .14825)	\$ .74534
<u>NG-G(S)</u>	<u>Small General Gas Service</u>				
	Basic Service Charge per Month	\$ 24.00			\$ 24.00
	Commodity Charge per Therm:				
	All Usage	\$ .31965	\$ .63477	(\$ .14825)	\$ .80617
<u>NG-G(M)</u>	<u>Medium General Gas Service</u>				
	Basic Service Charge per Month	\$ 30.00			\$ 30.00
	Commodity Charge per Therm:				
	All Usage	\$ .10199	\$ .63477	(\$ .14825)	\$ .58851
<u>NG-G(L)</u>	<u>Large General Gas Service</u>				
	Basic Service Charge per Month	\$ 150.00			\$ 150.00
	Commodity Charge per Therm:				
	All Usage	\$ .13175	\$ .63477	(\$ .14825)	\$ .61827
<u>NG-G(TE)</u>	<u>Transportation Eligible Gas Service</u>				
	Basic Service Charge per Month	\$ 950.00			\$ 950.00
	Commodity Charge per Therm:				
	All Usage	\$ .04103	\$ .63477	(\$ .14825)	\$ .52755
	Demand Charge <sup>5/</sup>	\$ .028720			\$ .028720
<u>NG-AC</u>	<u>Air-Conditioning Gas Service</u>				
	Basic Service Charge per Month	\$ 24.00			\$ 24.00
	Commodity Charge per Therm:				
	All Usage	\$ .07481	\$ .63477	(\$ .14825)	\$ .56133
<u>NG-WP</u>	<u>Water Pumping Gas Service</u>				
	Basic Service Charge per Month	\$ 30.00			\$ 30.00
	Commodity Charge per Therm:				
	All Usage	\$ .15670	\$ .63477	(\$ .14825)	\$ .64322

Issued:

September 20, 2012

Effective:

October 1, 2012

Advice Letter No.:

479

Issued by  
 John P. Hester  
 Senior Vice President

Filing Accepted  
 Effective

OCT 1 2012

Public Utilities Commission  
 of Nevada

**STATEMENT OF RATES**  
**EFFECTIVE RATES APPLICABLE TO NORTHERN NEVADA SCHEDULES <sup>1/2/</sup>**

Schedule Number	Type of Charge	Delivery Charge <sup>3/</sup>	Gas Cost		Currently Effective Tariff Rate
			Base Tariff Energy Rate <sup>4/</sup>	Deferred Energy Account Adjustment	
<u>NG-EG</u>	<u>Small Electric Generation Gas Service</u>				
	Basic Service Charge per Month	\$ 24.00			\$ 24.00
	Commodity Charge per Therm:				
	All Usage	\$ .21879	\$ .63477	(\$ .14825)	\$ .70531
<u>NG-CNG</u>	<u>Gas Service for Compression on Customer's Premises <sup>5/</sup></u>				
	Basic Service Charge per Month	\$ 33.00			\$ 33.00
	Commodity Charge per Therm:				
	All Usage	\$ .09772	\$ .63477	(\$ .14825)	\$ .58424
<u>NG-L</u>	<u>Street and Outdoor Lighting Gas Service</u>				
	Commodity Charge per Therm:				
	All Usage	\$ .60041	\$ .63477	(\$ .14825)	\$ 1.08693
<u>NG-OS</u>	<u>Optional Gas Service</u>	As specified on Sheet Nos. 48 through 51.			
<u>NG-AS</u>	<u>Alternative Sales Service</u>	As specified on Sheet Nos. 52 through 53.			

<sup>1/</sup> The charges shown above are subject to adjustments for taxes and assessments.

<sup>2/</sup> Customers taking transportation service will pay the Basic Service Charge, the Delivery Charge per therm, and Demand Charge, if applicable, of the Currently Effective Tariff Rate for each meter included in the transportation service agreement, plus an amount of \$.00042 per therm for distribution system shrinkage as defined in Rule No. 1 of this Nevada Gas Tariff for all volumes of gas not delivered through a direct connection to one of the Company's upstream interstate pipelines, and a Transportation Service Charge of \$500.00 per month per individually qualifying premise. For purposes of calculating Payment for Excess Imbalances, the Imbalance Commodity Charge is \$.47916 per therm and the Imbalance Reservation Charge is \$.27856 per therm. For customers converting from sales service, an additional amount equal to the currently effective Deferred Energy Accounting Adjustment will be assessed for a period of twelve (12) months.

<sup>3/</sup> Includes the following:

Component/Schedule	NG-RS	NG-RM	NG-G(S)	NG-G(M)	NG-G(L)
Margin	.34917	.30263	.42050	.13778	.16096
General Revenues Adjustment	(.03910)	(.04381)	(.10085)	(.03579)	(.02921)
Total	.31007	.25882	.31965	.10199	.13175

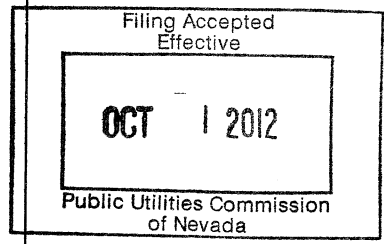
Component/Schedule	NG-G(TE)	NG-AC	NG-WP	NG-EG	NG-CNG	NG-L
Margin	.04103	.07481	.15670	.21879	.09772	.60041
General Revenues Adjustment	.00000	.00000	.00000	.00000	.00000	.00000
Total	.04103	.07481	.15670	.21879	.09772	.60041

Issued:  
**August 31, 2012**

Effective:  
**October 1, 2012**

Advice Letter No.:  
**479**

Issued by  
**John P. Hester**  
Senior Vice President





## **SOUTHWEST GAS CORPORATION**

Donald L. Soderberg, Vice President/Pricing

August 31, 2012

Ms. Donna Skau, Secretary  
Public Utilities Commission of Nevada  
Capitol Plaza  
1150 East William Street  
Carson City, NV 89701-3109

Dear Ms. Skau:

Southwest Gas Corporation herewith submits for filing Advice Letter No. 479. The workpapers and documentation to support the calculations contained in this filing have been provided under separate cover to Regulatory Operations Staff and the Bureau of Consumer Protection.

Communications regarding this Advice Letter should be directed to:

Ed Giesecking  
Director/Pricing and Tariffs  
Southwest Gas Corporation  
P.O. Box 98510  
Las Vegas, NV 89193-8510  
Telephone: 702-364-3271  
E-mail:  
[ed.giesecking@swgas.com](mailto:ed.giesecking@swgas.com)

Debra S. Gallo  
Director/Government and State  
Regulatory Affairs  
Southwest Gas Corporation  
P.O. Box 98510  
Las Vegas, NV 89193-8510  
Telephone: 702-876-7163  
E-mail: [debra.gallo@swgas.com](mailto:debra.gallo@swgas.com)

Respectfully submitted,

  
Donald L. Soderberg

DLS:pr  
Attachments

c: Eric Witkoski, BCP  
Michael Saunders, BCP  
Andie Arthurholtz, PUCN  
Anne-Marie Cuneo, PUCN



# SOUTHWEST GAS CORPORATION

Advice Letter No. 479

August 31, 2012

## PUBLIC UTILITIES COMMISSION OF NEVADA

Southwest Gas Corporation (Southwest) tenders herewith for filing the following tariff sheets applicable to its Nevada Gas Tariff No. 7:

<u>Proposed P.U.C.N Sheet No.</u>	<u>Supersedes P.U.C.N Sheet No.</u>
15th Revised Sheet No. 10	14th Revised Sheet No. 10
16th Revised Sheet No. 11	15th Revised Sheet No. 11
14th Revised Sheet No. 12	13th Revised Sheet No. 12
15th Revised Sheet No. 13	14th Revised Sheet No. 13

The purpose of this filing is to adjust rates to reflect the change in the quarterly Gas Cost Rate, effective October 1, 2012. The quarterly Gas Cost Rate includes two components, the Base Tariff Energy Rate (BTER) and the Deferred Energy Account Adjustment (DEAA) rate.

In Southern Nevada, the BTER rate will decrease by \$0.04437 per therm, and the DEAA rate will decrease by \$0.02500 per therm. As such, the overall change in the Southern Nevada Gas Cost Rate will be a decrease of \$0.06937 per therm. This results in a decrease in annual revenues of \$26,581,059.

In Northern Nevada, the BTER will decrease by \$0.02178 per therm, and the DEAA rate will decrease by \$0.02500 per therm. As such, the overall change in the Northern Nevada Gas Cost Rate will be a decrease of \$0.04678 per therm. This results in a decrease in annual revenues of \$4,197,321.

Customers are being notified of the rate changes by means of a bill insert included with each bill beginning approximately September 5, 2012. Copies of the bill inserts are attached.

This filing is made in accordance with the Nevada Administrative Code, NAC Chapter 703, of the Commission's Rules of Practice and Procedure.

Respectfully submitted,  
SOUTHWEST GAS CORPORATION

By

Donald L. Soderberg

DLS:pr  
Attachments

**STATEMENT OF RATES**  
**EFFECTIVE RATES APPLICABLE TO SOUTHERN NEVADA SCHEDULES <sup>1/2/</sup>**

Schedule Number	Type of Charge	Delivery Charge <sup>3/</sup>	Gas Cost		Currently Effective Tariff Rate
			Base Tariff Energy Rate <sup>4/</sup>	Deferred Energy Account Adjustment	
<u>SG-RS</u>	<u>Single-Family Residential Gas Service</u>				
	Basic Service Charge per Month	\$ 9.00			\$ 9.00
	Commodity Charge per Therm:				
	All Usage	\$ .31651	\$ .43735	(\$ .10997)	\$ .64389
<u>SG-RM</u>	<u>Multi-Family Residential Gas Service</u>				
	Basic Service Charge per Month	\$ 9.00			\$ 9.00
	Commodity Charge per Therm:				
	All Usage	\$ .23432	\$ .43735	(\$ .10997)	\$ .56170
<u>SG-G(S)</u>	<u>Small General Gas Service</u>				
	Basic Service Charge per Month	\$ 21.50			\$ 21.50
	Commodity Charge per Therm:				
	All Usage	\$ .36719	\$ .43735	(\$ .10997)	\$ .69457
<u>SG-G(M)</u>	<u>Medium General Gas Service</u>				
	Basic Service Charge per Month	\$ 25.00			\$ 25.00
	Commodity Charge per Therm:				
	All Usage	\$ .14039	\$ .43735	(\$ .10997)	\$ .46777
<u>SG-G(L)</u>	<u>Large General Gas Service</u>				
	Basic Service Charge per Month	\$ 150.00			\$ 150.00
	Commodity Charge per Therm:				
	All Usage	\$ .18730	\$ .43735	(\$ .10997)	\$ .51468
<u>SG-G(TE)</u>	<u>Transportation Eligible Gas Service</u>				
	Basic Service Charge per Month	\$ 950.00			\$ 950.00
	Commodity Charge per Therm:				
	All Usage	\$ .03746	\$ .43735	(\$ .10997)	\$ .36484
	Demand Charge <sup>5/</sup>	\$ .035240			\$ .035240
<u>SG-AC</u>	<u>Air-Conditioning Gas Service</u>				
	Basic Service Charge per Month	\$ 21.50			\$ 21.50
	Commodity Charge per Therm:				
	All Usage	\$ .12146	\$ .43735	(\$ .10997)	\$ .44884
<u>SG-WP</u>	<u>Water Pumping Gas Service</u>				
	Basic Service Charge per Month	\$ 50.00			\$ 50.00
	Commodity Charge per Therm:				
	All Usage	\$ .03567	\$ .43735	(\$ .10997)	\$ .36305

<p>Issued:  <b>August 31, 2012</b></p> <p>Effective:  <b>October 1, 2012</b></p> <p>Advice Letter No.:  <u>479</u></p>	<p>Issued by  <b>John P. Hester</b>  Senior Vice President</p>
--	--



**STATEMENT OF RATES**  
**EFFECTIVE RATES APPLICABLE TO SOUTHERN NEVADA SCHEDULES <sup>1/2/</sup>**

Schedule Number	Type of Charge	Delivery Charge <sup>3/</sup>	Gas Cost		Currently Effective Tariff Rate
			Base Tariff Energy Rate <sup>4/</sup>	Deferred Energy Account Adjustment	
SG-EG	<b>Small Electric Generation Gas Service</b>				
	Basic Service Charge per Month	\$ 21.50			\$ 21.50
	Commodity Charge per Therm:				
	All Usage	\$ .07357	\$ .43735	(\$ .10997)	\$ .40095
SG-CNG	<b>Gas Service for Compression on Customer's Premises <sup>6/</sup></b>				
	Basic Service Charge per Month	\$ 21.50			\$ 21.50
	Commodity Charge per Therm:				
	All Usage	\$ .09112	\$ .43735	(\$ .10997)	\$ .41850
SG-L	<b>Street and Outdoor Lighting Gas Service</b>				
	Commodity Charge per Therm:				
	All Usage	\$ .32310	\$ .43735	(\$ .10997)	\$ .65048
SG-OS	<b>Optional Gas Service</b>	As specified on Sheet Nos. 48 through 51.			
SG-AS	<b>Alternative Sales Service</b>	As specified on Sheet Nos. 52 through 53.			

<sup>1/</sup> The charges shown above are subject to adjustments for taxes and assessments.

<sup>2/</sup> Customers taking transportation service will pay the Basic Service Charge, the Delivery Charge per therm, and Demand Charge, if applicable, of the Currently Effective Tariff Rate for each meter included in the transportation service agreement, plus an amount for distribution system shrinkage for all volumes of gas not delivered through a direct connection to one of the Company's upstream interstate pipelines. The high pressure shrinkage rate is \$.00011 per therm, and the low pressure shrinkage rate is \$.00279 per therm. In addition, the customer will also pay a Transportation Service Charge of \$500.00 per month per individually qualifying premise. For purposes of calculating Payment for Excess Imbalances, the Imbalance Commodity Charge is \$.47725 per therm and the Imbalance Reservation Charge is \$.09275 per therm. For customers converting from sales service, an additional amount equal to the currently effective Deferred Energy Accounting Adjustment will be assessed for a period of twelve (12) months.

<sup>3/</sup> Includes the following:

Component/Schedule	SG-RS	SG-RM	SG-G(S)	SG-G(M)	SG-G(L)
Margin	.31590	.24811	.35336	.14823	.18864
Accumulated Deferred Interest Rate Adjustment	(.00229)	(.00229)	(.00229)	(.00229)	(.00229)
General Revenues Adjustment	.01467	(.01544)	.08643	(.00270)	(.00156)
Total	.32828	.23038	.43750	.14324	.18479

Component/Schedule	SG-G(TE)	SG-AC	SG-WP	SG-EG	SG-CNG	SG-L
Margin	.03975	.12375	.03796	.07586	.09341	.32539
Accumulated Deferred Interest Rate Adjustment	(.00229)	(.00229)	(.00229)	(.00229)	(.00229)	(.00229)
General Revenues Adjustment	.00000	.00000	.00000	.00000	.00000	.00000
Total	.03746	.12146	.03567	.07357	.09112	.32310

<p>Issued:  <b>August 31, 2012</b></p> <p>Effective:  <b>October 1, 2012</b></p> <p>Advice Letter No.:  <b>479</b></p>	<p>Issued by  <b>John P. Hester</b>  Senior Vice President</p>	
--	--	--

**STATEMENT OF RATES**  
**EFFECTIVE RATES APPLICABLE TO NORTHERN NEVADA SCHEDULES <sup>1/2/</sup>**

Schedule Number	Type of Charge	Delivery Charge <sup>3/</sup>	Gas Cost		Currently Effective Tariff Rate	
			Base Tariff Energy Rate <sup>4/</sup>	Deferred Energy Account Adjustment		
<u>NG-RS</u>	<u>Single-Family Residential Gas Service</u>					
	Basic Service Charge per Month	\$ 9.00			\$ 9.00	
	Commodity Charge per Therm:					
	All Usage	\$ .32717	\$ .63477	(\$ .14825)	\$ .81369	R
<u>NG-RM</u>	<u>Multi-Family Residential Gas Service</u>					
	Basic Service Charge per Month	\$ 9.00			\$ 9.00	
	Commodity Charge per Therm:					
	All Usage	\$ .27845	\$ .63477	(\$ .14825)	\$ .76497	R
<u>NG-G(S)</u>	<u>Small General Gas Service</u>					
	Basic Service Charge per Month	\$ 24.00			\$ 24.00	
	Commodity Charge per Therm:					
	All Usage	\$ .35362	\$ .63477	(\$ .14825)	\$ .84014	R
<u>NG-G(M)</u>	<u>Medium General Gas Service</u>					
	Basic Service Charge per Month	\$ 30.00			\$ 30.00	
	Commodity Charge per Therm:					
	All Usage	\$ .11463	\$ .63477	(\$ .14825)	\$ .60115	R
<u>NG-G(L)</u>	<u>Large General Gas Service</u>					
	Basic Service Charge per Month	\$ 150.00			\$ 150.00	
	Commodity Charge per Therm:					
	All Usage	\$ .14598	\$ .63477	(\$ .14825)	\$ .63250	R
<u>NG-G(TE)</u>	<u>Transportation Eligible Gas Service</u>					
	Basic Service Charge per Month	\$ 950.00			\$ 950.00	
	Commodity Charge per Therm:					
	All Usage	\$ .04103	\$ .63477	(\$ .14825)	\$ .52755	R
	Demand Charge <sup>5/</sup>	\$ .028720			\$ .028720	
<u>NG-AC</u>	<u>Air-Conditioning Gas Service</u>					
	Basic Service Charge per Month	\$ 24.00			\$ 24.00	
	Commodity Charge per Therm:					
	All Usage	\$ .07481	\$ .63477	(\$ .14825)	\$ .56133	R
<u>NG-WP</u>	<u>Water Pumping Gas Service</u>					
	Basic Service Charge per Month	\$ 30.00			\$ 30.00	
	Commodity Charge per Therm:					
	All Usage	\$ .15670	\$ .63477	(\$ .14825)	\$ .64322	R

<p>Issued:</p> <p align="center"><b>August 31, 2012</b></p> <p>Effective:</p> <p align="center"><b>October 1, 2012</b></p> <p>Advice Letter No.:</p> <p align="center"><b>479</b></p>	<p>Issued by</p> <p><b>John P. Hester</b></p> <p>Senior Vice President</p>
---	--

**STATEMENT OF RATES**  
**EFFECTIVE RATES APPLICABLE TO NORTHERN NEVADA SCHEDULES <sup>1/2/</sup>**

Schedule Number	Type of Charge	Delivery Charge <sup>3/</sup>	Gas Cost		Currently Effective Tariff Rate
			Base Tariff Energy Rate <sup>4/</sup>	Deferred Energy Account Adjustment	
<u>NG-EG</u>	<u>Small Electric Generation Gas Service</u>				
	Basic Service Charge per Month	\$ 24.00			\$ 24.00
	Commodity Charge per Therm:				
	All Usage	\$ .21879	\$ .63477	(\$ .14825)	\$ .70531
<u>NG-CNG</u>	<u>Gas Service for Compression on Customer's Premises <sup>6/</sup></u>				
	Basic Service Charge per Month	\$ 33.00			\$ 33.00
	Commodity Charge per Therm:				
	All Usage	\$ .09772	\$ .63477	(\$ .14825)	\$ .58424
<u>NG-L</u>	<u>Street and Outdoor Lighting Gas Service</u>				
	Commodity Charge per Therm:				
	All Usage	\$ .60041	\$ .63477	(\$ .14825)	\$ 1.08693
<u>NG-OS</u>	<u>Optional Gas Service</u>	As specified on Sheet Nos. 48 through 51.			
<u>NG-AS</u>	<u>Alternative Sales Service</u>	As specified on Sheet Nos. 52 through 53.			

<sup>1/</sup> The charges shown above are subject to adjustments for taxes and assessments.

<sup>2/</sup> Customers taking transportation service will pay the Basic Service Charge, the Delivery Charge per therm, and Demand Charge, if applicable, of the Currently Effective Tariff Rate for each meter included in the transportation service agreement, plus an amount of \$.00042 per therm for distribution system shrinkage as defined in Rule No. 1 of this Nevada Gas Tariff for all volumes of gas not delivered through a direct connection to one of the Company's upstream interstate pipelines, and a Transportation Service Charge of \$500.00 per month per individually qualifying premise. For purposes of calculating Payment for Excess Imbalances, the Imbalance Commodity Charge is \$.47916 per therm and the Imbalance Reservation Charge is \$.27856 per therm. For customers converting from sales service, an additional amount equal to the currently effective Deferred Energy Accounting Adjustment will be assessed for a period of twelve (12) months.

<sup>3/</sup> Includes the following:

Component/Schedule	NG-RS	NG-RM	NG-G(S)	NG-G(M)	NG-G(L)
Margin	.34917	.30263	.42050	.13778	.16096
General Revenues Adjustment	(.03910)	(.04381)	(.10085)	(.03579)	(.02921)
Total	.31007	.25882	.31965	.10199	.13175

Component/Schedule	NG-G(TE)	NG-AC	NG-WP	NG-EG	NG-CNG	NG-L
Margin	.04103	.07481	.15670	.21879	.09772	.60041
General Revenues Adjustment	.00000	.00000	.00000	.00000	.00000	.00000
Total	.04103	.07481	.15670	.21879	.09772	.60041

<p>Issued:  <b>August 31, 2012</b></p> <p>Effective:  <b>October 1, 2012</b></p> <p>Advice Letter No.:  <b>479</b></p>	<p>Issued by  <b>John P. Hester</b>  Senior Vice President</p>
--	--



### **Quarterly Gas Cost Rate Adjustment—Southern Nevada Division**

On August 31, 2012, Southwest Gas Corporation filed a Quarterly Gas Cost Rate Adjustment with the Public Utilities Commission of Nevada. On October 1, 2012, rates for Southern Nevada customers will decrease by \$0.06937 per therm. The result of this filing is a decrease in annual revenues of \$26,581,059 or 8.2%.

The transactions and recorded cost of natural gas which are the basis for the quarterly rate adjustment will be reviewed for reasonableness and prudence in the next annual rate adjustment proceeding.

Monthly bills that contain usage prior to and after the effective date of the rate adjustment will be billed the applicable rate, based on when usage occurred.

The table on the back of this notice shows the change in an average monthly bill for each rate schedule. The change to individual customer bills will vary depending on the amount of gas consumed.

<b>SOUTHERN NEVADA DIVISION RATE SCHEDULE</b>			
		<b>Avg. Monthly Change (\$)</b>	<b>Percentage Change</b>
Single-Family Residential Gas Service	SG-RS	- 2.90	- 7.4%
Multi-Family Apartment Residential Gas Service	SG-RM	- 1.61	- 6.8%
General Gas Service			
Small	SG-G (S)	- 1.60	- 3.9%
Medium	SG-G (M)	- 14.56	- 10.5%
Large	SG-G (L)	- 117.74	- 10.4%
Transportation Eligible	SG-G (TE)	- 3,768.04	- 14.1%
Air Conditioning Gas Service	SG-AC	- 29.81	- 12.2%
Water Pumping Gas Service	SG-WP	- 683.29	- 15.9%
Gas Service for Compression on Customer Premises	SG-CNG	- 398.38	- 14.1%
Street and Outdoor Lighting Gas Service	SG-L	- 4.03	- 9.6%

For additional information, please call customer assistance at the number listed on your bill. Customers may send written comments or protests to:

Public Utilities Commission of Nevada      Public Utilities Commission of Nevada  
 1150 East William Street                      or      9075 West Diablo Drive, Suite 250  
 Carson City, NV 89701-3109                      Las Vegas, NV 89148-7674



**SOUTHWEST GAS CORPORATION**

**Quarterly Gas Cost Rate Adjustment—Northern Nevada Division**

On August 31, 2012, Southwest Gas Corporation filed a Quarterly Gas Cost Rate Adjustment with the Public Utilities Commission of Nevada. On October 1, 2012, rates for Northern Nevada customers will decrease by \$0.04678 per therm. The result of this filing is a decrease in annual revenues of \$4,197,321 or 5.1%.

The transactions and recorded cost of natural gas which are the basis for the quarterly rate adjustment will be reviewed for reasonableness and prudence in the next annual rate adjustment proceeding.

Monthly bills that contain usage prior to and after the effective date of the rate adjustment will be billed the applicable rate, based on when usage occurred.

The table on the back of this notice shows the change in an average monthly bill for each rate schedule. The change to individual customer bills will vary depending on the amount of gas consumed.

NORTHERN NEVADA DIVISION RATE SCHEDULE			Avg. Monthly Change (\$)	Percentage Change
Single-Family Residential Gas Service	NG-RS		- 2.90	- 4.7%
Multi-Family Residential Gas Service	NG-RM		- 1.70	- 4.5%
General Gas Service				
Small	NG-G (S)		- 1.26	- 2.7%
Medium	NG-G (M)		- 8.30	- 5.8%
Large	NG-G (L)		- 79.51	- 6.2%
Transportation Eligible	NG-G (TE)		- 1,237.13	- 7.1%
Air Conditioning Gas Service	NG-AC		- 13.12	- 6.7%
Water Pumping Gas Service	NG-WP		- 4.17	- 4.6%
Small Electric Generation Gas Service	NG-EG		- 27.17	- 5.9%
Street and Outdoor Lighting Gas Service	NG-L		- 1.21	- 4.1%

For additional information, please call customer assistance at the number listed on your bill. Customers may send written comments or protests to:

Public Utilities Commission of Nevada      Public Utilities Commission of Nevada  
 1150 East William Street                      or 9075 West Diablo Drive, Suite 250  
 Carson City, NV 89701-3109                      Las Vegas, NV 89148-7674