



BRIAN SANDOVAL
Governor

STATE OF NEVADA
PUBLIC UTILITIES COMMISSION

JOSEPH C. REYNOLDS
Chairman

PAUL A. THOMSEN
Commissioner

ANN C. PONGRACZ
Commissioner

STEPHANIE MULLEN
Executive Director

December 23, 2016

Southwest Gas Corporation
PO Box 98510
Las Vegas, NV 89193-8510

RE: Docket No.: 16-11043
Southwest Gas Corporation filed Notice under Advice Letter No. 502 to adjust Northern and Southern Nevada Base Tariff Energy Rates and Deferred Energy Account Adjustment Rates effective January 1, 2017.

To Whom It May Concern:

With reference to the above-captioned docket, enclosed is a copy of the tariff sheets which were accepted for filing by the Public Utilities Commission of Nevada, effective January 1, 2017. Staff has reviewed the tariff sheets and believes that they are consistent with the Commission's Order.

Sincerely,

A handwritten signature in cursive script that reads "Liz Biasotti".

Liz Biasotti
Administrative Assistant III

Enclosure(s)

cc: PUC Master File

STATEMENT OF RATES
EFFECTIVE RATES APPLICABLE TO SOUTHERN NEVADA SCHEDULES ^{1/2/}

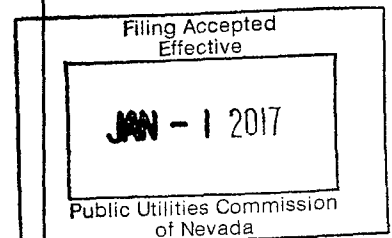
Schedule Number	Description	Delivery Charge ^{3/}	Gas Cost			Currently Effective Tariff Rate	
			Base Tariff Energy Rate ^{4/}	Deferred Energy Account Adjustment	Renewable Energy Program Rate		
<u>SG-RS</u>	<u>Single-Family Residential Gas Service</u>						
	Basic Service Charge per Month	\$ 10.80				\$ 10.80	
	Commodity Charge per Therm:						
	All Usage	\$.39778	\$.29447	(\$.10846)	\$.00063	\$.58442	R
<u>SG-RM</u>	<u>Multi-Family Residential Gas Service</u>						
	Basic Service Charge per Month	\$ 9.00				\$ 9.00	
	Commodity Charge per Therm:						
	All Usage	\$.36613	\$.29447	(\$.10846)	\$.00063	\$.55277	R
<u>SG-RAC</u>	<u>Air Conditioning Residential Gas Service</u>						
	Basic Service Charge per Month	\$ 10.80				\$ 10.80	
	Commodity Charge per Therm:						
	All Usage	\$.13370	\$.29447	(\$.10846)	\$.00063	\$.32034	R
<u>SG-G1</u>	<u>General Gas Service - 1</u>						
	Basic Service Charge per Month	\$ 25.80				\$ 25.80	
	Commodity Charge per Therm:						
	All Usage	\$.41714	\$.29447	(\$.10846)	\$.00063	\$.60378	R
<u>SG-G2</u>	<u>General Gas Service - 2</u>						
	Basic Service Charge per Month	\$ 160.00				\$ 160.00	
	Commodity Charge per Therm:						
	All Usage	\$.14242	\$.29447	(\$.10846)	\$.00063	\$.32906	R
<u>SG-G3</u>	<u>General Gas Service - 3</u>						
	Basic Service Charge per Month	\$ 350.00				\$ 350.00	
	Commodity Charge per Therm:						
	All Usage	\$.10566	\$.29447	(\$.10846)	\$.00063	\$.29230	R
<u>SG-G4</u>	<u>General Gas Service - 4</u>						
	Basic Service Charge per Month	\$1,000.00				\$1,000.00	
	Commodity Charge per Therm:						
	All Usage	\$.03936	\$.29447	(\$.10846)	\$.00063	\$.22600	R
	Demand Charge ^{5/}	\$.03950				\$.03950	
<u>SG-AC</u>	<u>Air Conditioning Gas Service</u>						
	Basic Service Charge per Month	\$ 25.80				\$ 25.80	
	Commodity Charge per Therm:						
	All Usage	\$.07875	\$.29447	(\$.10846)	\$.00063	\$.26539	R

Issued:
November 30, 2016

Effective:
January 1, 2017

Advice Letter No.:
502

Issued by
Justin Lee Brown
Vice President



STATEMENT OF RATES
EFFECTIVE RATES APPLICABLE TO SOUTHERN NEVADA SCHEDULES ^{1/2/}

Schedule Number	Description	Delivery Charge ^{3/}	Gas Cost			Currently Effective Tariff Rate		
			Base Tariff Energy Rate ^{4/}	Deferred Energy Account Adjustment	Renewable Energy Program Rate			
SG-WP	Water Pumping Gas Service							
	Basic Service Charge per Month	\$ 250.00				\$ 250.00		
	Commodity Charge per Therm:							
	All Usage	\$.13255	\$.29447	(\$.10846)	\$.00063	\$.31919	R	
SG-EG	Small Electric Generation Gas Service							
	Basic Service Charge per Month	Otherwise Applicable Rate Schedule						
	Commodity Charge per Therm:							
	All Usage	\$.07875	\$.29447	(\$.10846)	\$.00063	\$.26539	R	
SG-CNG	Gas Service for Compression on Customer's Premises ^{6/}							
	Basic Service Charge per Month	\$ 25.80				\$ 25.80		
	Commodity Charge per Therm:							
	All Usage	\$.11638	\$.29447	(\$.10846)	\$.00063	\$.30302	R	
SG-L	Street and Outdoor Lighting Gas Service							
	Commodity Charge per Therm:							
	All Usage	\$.33458	\$.29447	(\$.10846)	\$.00063	\$.52122	R	
SG-OS	Optional Gas Service	As specified on Sheet Nos. 48 through 51.						
SG-AS	Alternative Sales Service	As specified on Sheet Nos. 52 through 53.						

^{1/} The charges shown above are subject to adjustments for taxes and assessments.

^{2/} Customers taking transportation service will pay the Basic Service Charge, the Delivery Charge per therm, and Demand Charge, if applicable, of the Currently Effective Tariff Rate for each meter included in the transportation service agreement, plus an amount for distribution system shrinkage for all volumes of gas not delivered through a direct connection to one of the Company's upstream interstate pipelines. The high pressure shrinkage rate is \$.00000 per therm, and the low pressure shrinkage rate is \$.00000 per therm. Additionally customers will pay the Southwest Gas Transmission Company (SGTC) Annual Charge Adjustment (ACA) rate of \$.00013 per therm for all scheduled volumes that flow through the SGTC pipeline. The ACA Charge will also apply to applicable traded and imbalance volumes. Also, customers will pay the Conservation and Energy Efficiency rate of \$.01471 per therm. In addition, the customer will also pay a Transportation Service Charge of \$500.00 per month per individually qualifying premise. For purposes of calculating Payment for Excess Imbalances, the Imbalance Commodity Charge is \$.37446 per therm and the Imbalance Reservation Charge is \$.07705 per therm. For customers converting from sales service, an additional amount equal to the currently effective Deferred Energy Accounting Adjustment will be assessed for a period of twelve (12) months.

<p>Issued: November 30, 2016</p> <p>Effective: January 1, 2017</p> <p>Advice Letter No.: 502</p>	<p>Issued by Justin Lee Brown Vice President</p>	<p>Filing Accepted Effective</p> <div style="border: 1px solid black; padding: 5px; display: inline-block;"> <p>JAN - 1 2017</p> </div> <p>Public Utilities Commission of Nevada</p>
--	--	---

STATEMENT OF RATES
EFFECTIVE RATES APPLICABLE TO NORTHERN NEVADA SCHEDULES ^{1/2}

Schedule Number	Description	Delivery Charge ^{3/}	Gas Cost			Currently Effective Tariff Rate
			Base Tariff Energy Rate ^{4/}	Deferred Energy Account Adjustment	Renewable Energy Program Rate	
NG-RS	Single-Family Residential Gas Service					
	Basic Service Charge per Month	\$ 10.80				\$ 10.80
	Commodity Charge per Therm:					
	All Usage	\$.46742	\$.54128	(\$.09050)	(\$.00049)	\$.91771
NG-RM	Multi-Family Residential Gas Service					
	Basic Service Charge per Month	\$ 10.80				\$ 10.80
	Commodity Charge per Therm:					
	All Usage	\$.54513	\$.54128	(\$.09050)	(\$.00049)	\$.99542
NG-RAC	Air Conditioning Residential Gas Service					
	Basic Service Charge per Month	\$ 10.80				\$ 10.80
	Commodity Charge per Therm:					
	All Usage	\$.29781	\$.54128	(\$.09050)	(\$.00049)	\$.74810
NG-G1	General Gas Service - 1					
	Basic Service Charge per Month	\$ 28.80				\$ 28.80
	Commodity Charge per Therm:					
	All Usage	\$.39923	\$.54128	(\$.09050)	(\$.00049)	\$.84952
NG-G2	General Gas Service - 2					
	Basic Service Charge per Month	\$ 160.00				\$ 160.00
	Commodity Charge per Therm:					
	All Usage	\$.18516	\$.54128	(\$.09050)	(\$.00049)	\$.63545
NG-G3	General Gas Service - 3					
	Basic Service Charge per Month	\$ 350.00				\$ 350.00
	Commodity Charge per Therm:					
	All Usage	\$.08350	\$.54128	(\$.09050)	(\$.00049)	\$.53379
NG-G4	General Gas Service - 4					
	Basic Service Charge per Month	\$1,000.00				\$1,000.00
	Commodity Charge per Therm:					
	All Usage	\$.04026	\$.54128	(\$.09050)	(\$.00049)	\$.49055
	Demand Charge ^{5/}	\$.02400				\$.02400
NG-AC	Air Conditioning Gas Service					
	Basic Service Charge per Month	\$ 28.80				\$ 28.80
	Commodity Charge per Therm:					
	All Usage	\$.10686	\$.54128	(\$.09050)	(\$.00049)	\$.55715

<p>Issued: November 30, 2016</p> <p>Effective: January 1, 2017</p> <p>Advice Letter No.: 502</p>	<p>Issued by Justin Lee Brown Vice President</p>	<p>Filing Accepted Effective</p> <div style="border: 1px solid black; padding: 5px; display: inline-block;"> <p>JAN - 1 2017</p> </div> <p>Public Utilities Commission of Nevada</p>
---	--	---

STATEMENT OF RATES
EFFECTIVE RATES APPLICABLE TO NORTHERN NEVADA SCHEDULES ^{1/2/}

Schedule Number	Description	Delivery Charge ^{3/}	Gas Cost		Renewable Energy Program Rate	Currently Effective Tariff Rate
			Base Tariff Energy Rate ^{4/}	Deferred Energy Account Adjustment		
NG-WP	<u>Water Pumping Gas Service</u>					
	Basic Service Charge per Month	\$ 36.00				\$ 36.00
	Commodity Charge per Therm:					
	All Usage	\$.15715	\$.54128	(\$.09050)	(\$.00049)	\$.60744
NG-EG	<u>Small Electric Generation Gas Service</u>					
	Basic Service Charge per Month	Otherwise Applicable Rate Schedule				
	Commodity Charge per Therm:					
	All Usage	\$.15898	\$.54128	(\$.09050)	(\$.00049)	\$.60927
NG-CNG	<u>Gas Service for Compression on Customer's Premises ^{6/}</u>					
	Basic Service Charge	\$ 25.80				\$ 25.80
	Commodity Charge per Therm:					
	All Usage	\$.13289	\$.54128	(\$.09050)	(\$.00049)	\$.58318
NG-L	<u>Street and Outdoor Lighting Gas Service</u>					
	Commodity Charge per Therm:					
	All Usage	\$.88116	\$.54128	(\$.09050)	(\$.00049)	\$ 1.33145
NG-OS	<u>Optional Gas Service</u>					
		As specified on Sheet Nos. 48 through 51.				
NG-AS	<u>Alternative Sales Service</u>					
		As specified on Sheet Nos. 52 through 53.				

^{1/} The charges shown above are subject to adjustments for taxes and assessments.

^{2/} Customers taking transportation service will pay the Basic Service Charge, the Delivery Charge per therm, and Demand Charge, if applicable, of the Currently Effective Tariff Rate for each meter included in the transportation service agreement, plus an amount of \$.00000 per therm for distribution system shrinkage as defined in Rule No. 1 of this Nevada Gas Tariff for all volumes of gas not delivered through a direct connection to one of the Company's upstream interstate pipelines, the Conservation and Energy Efficiency rate of \$.01492 per therm, and a Transportation Service Charge of \$500.00 per month per individually qualifying premise. For purposes of calculating Payment for Excess Imbalances, the Imbalance Commodity Charge is \$.36900 per therm and the Imbalance Reservation Charge is \$.33033 per therm. For customers converting from sales service, an additional amount equal to the currently effective Deferred Energy Accounting Adjustment will be assessed for a period of twelve (12) months.

<p>Issued: November 30, 2016</p> <p>Effective: January 1, 2017</p> <p>Advice Letter No.: 502</p>	<p align="center">Issued by Justin Lee Brown Vice President</p>	<p align="center">Filing Accepted Effective</p> <p align="center">JAN - 1 2017</p> <p align="center">Public Utilities Commission of Nevada</p>
---	---	---



SOUTHWEST GAS CORPORATION

November 30, 2016

Ms. Breanne Potter
Commission Secretary
Public Utilities Commission of Nevada
1150 East William Street
Carson City, NV 89701-3109

Dear Ms. Potter:

Southwest Gas Corporation herewith submits for filing Advice Letter No. 502. The workpapers to support the calculations contained in this filing are being provided under separate cover to Regulatory Operations Staff and the Bureau of Consumer Protection.

Communications regarding this Advice Letter should be directed to:

Ed Giesecking
Director/Regulation & Energy Efficiency
Southwest Gas Corporation
P.O. Box 98510
Las Vegas, NV 89193-8510
Telephone: 702-364-3271
E-mail: ed.giesecking@swgas.com

Amy L. Timperley
Regulatory Manager/Nevada
Southwest Gas Corporation
P.O. Box 98510
Las Vegas, NV 89193-8510
Telephone: 702-876-7266
E-mail: amy.timperley@swgas.com

Respectfully submitted,

Amy L. Timperley
Regulatory Manager/Nevada

Enclosures

c: Eric Witkoski, BCP
Anne-Marie Cuneo, PUCN



SOUTHWEST GAS CORPORATION

Advice Letter No. 502

November 30, 2016

PUBLIC UTILITIES COMMISSION OF NEVADA

Southwest Gas Corporation tenders herewith for filing the following tariff sheets applicable to its Nevada Gas Tariff No. 7:

Proposed PUCN Sheet No.

38th Revised Sheet No. 10
38th Revised Sheet No. 11
37th Revised Sheet No. 12
37th Revised Sheet No. 13

Supersedes PUCN Sheet No.

37th Revised Sheet No. 10
37th Revised Sheet No. 11
36th Revised Sheet No. 12
36th Revised Sheet No. 13

The purpose of this filing is to adjust rates to reflect the change in the quarterly Gas Cost rate, effective January 1, 2017. The quarterly Gas Cost rate includes two components, the Base Tariff Energy Rate (BTER) and the Deferred Energy Account Adjustment (DEAA).

In Southern Nevada, the BTER will increase by \$0.00117 per therm, and the DEAA will decrease by \$0.02500 per therm. As such, the overall change in the Southern Nevada Gas Cost rate will be a decrease of \$0.02383 per therm. This results in a decrease in annualized revenue of \$9,509,240. The calculation of Southern Nevada's annualized revenue change is attached in Schedule 1.

In Northern Nevada, the BTER will increase by \$0.01416 per therm, and the DEAA will increase by \$0.02193 per therm. As such, the overall change in the Northern Nevada Gas Cost rate will be an increase of \$0.03609 per therm. This results in an increase in annualized revenue of \$3,291,764. The calculation of Northern Nevada's annualized revenue change is attached in Schedule 2.

Customers are being notified of the rate changes by means of a bill insert included with each bill beginning approximately November 30, 2016. Copies of the bill inserts are attached.

This filing is made in accordance with the Nevada Administrative Code, NAC Chapter 703, of the Commission's Rules of Practice and Procedure.

Respectfully submitted,
SOUTHWEST GAS CORPORATION

By


Justin Lee Brown

STATEMENT OF RATES
EFFECTIVE RATES APPLICABLE TO SOUTHERN NEVADA SCHEDULES ^{1/2/}

Schedule Number	Description	Delivery Charge ^{3/}	Gas Cost			Currently Effective Tariff Rate	
			Base Tariff Energy Rate ^{4/}	Deferred Energy Account Adjustment	Renewable Energy Program Rate		
<u>SG-RS</u>	<u>Single-Family Residential Gas Service</u>						
	Basic Service Charge per Month	\$ 10.80				\$ 10.80	
	Commodity Charge per Therm:						
	All Usage	\$.39778	\$.29447	(\$.10846)	\$.00063	\$.58442	R
<u>SG-RM</u>	<u>Multi-Family Residential Gas Service</u>						
	Basic Service Charge per Month	\$ 9.00				\$ 9.00	
	Commodity Charge per Therm:						
	All Usage	\$.36613	\$.29447	(\$.10846)	\$.00063	\$.55277	R
<u>SG-RAC</u>	<u>Air Conditioning Residential Gas Service</u>						
	Basic Service Charge per Month	\$ 10.80				\$ 10.80	
	Commodity Charge per Therm:						
	All Usage	\$.13370	\$.29447	(\$.10846)	\$.00063	\$.32034	R
<u>SG-G1</u>	<u>General Gas Service - 1</u>						
	Basic Service Charge per Month	\$ 25.80				\$ 25.80	
	Commodity Charge per Therm:						
	All Usage	\$.41714	\$.29447	(\$.10846)	\$.00063	\$.60378	R
<u>SG-G2</u>	<u>General Gas Service - 2</u>						
	Basic Service Charge per Month	\$ 160.00				\$ 160.00	
	Commodity Charge per Therm:						
	All Usage	\$.14242	\$.29447	(\$.10846)	\$.00063	\$.32906	R
<u>SG-G3</u>	<u>General Gas Service - 3</u>						
	Basic Service Charge per Month	\$ 350.00				\$ 350.00	
	Commodity Charge per Therm:						
	All Usage	\$.10566	\$.29447	(\$.10846)	\$.00063	\$.29230	R
<u>SG-G4</u>	<u>General Gas Service - 4</u>						
	Basic Service Charge per Month	\$1,000.00				\$1,000.00	
	Commodity Charge per Therm:						
	All Usage	\$.03936	\$.29447	(\$.10846)	\$.00063	\$.22600	R
	Demand Charge ^{5/}	\$.03950				\$.03950	
<u>SG-AC</u>	<u>Air Conditioning Gas Service</u>						
	Basic Service Charge per Month	\$ 25.80				\$ 25.80	
	Commodity Charge per Therm:						
	All Usage	\$.07875	\$.29447	(\$.10846)	\$.00063	\$.26539	R

Issued:
November 30, 2016

Effective:
January 1, 2017

Advice Letter No.:
502

Issued by
Justin Lee Brown
Vice President

STATEMENT OF RATES
EFFECTIVE RATES APPLICABLE TO SOUTHERN NEVADA SCHEDULES ^{1/2/}

Schedule Number	Description	Delivery Charge ^{3/}	Gas Cost			Renewable Energy Program Rate	Currently Effective Tariff Rate	
			Base Tariff Energy Rate ^{4/}	Deferred Energy Account Adjustment				
SG-WP	<u>Water Pumping Gas Service</u>							
	Basic Service Charge per Month	\$ 250.00					\$ 250.00	
	Commodity Charge per Therm:							
	All Usage	\$.13255	\$.29447	(\$.10846)	\$.00063	\$.31919	R	
SG-EG	<u>Small Electric Generation Gas Service</u>							
	Basic Service Charge per Month	Otherwise Applicable Rate Schedule						
	Commodity Charge per Therm:							
	All Usage	\$.07875	\$.29447	(\$.10846)	\$.00063	\$.26539	R	
SG-CNG	<u>Gas Service for Compression on Customer's Premises ^{6/}</u>							
	Basic Service Charge per Month	\$ 25.80					\$ 25.80	
	Commodity Charge per Therm:							
	All Usage	\$.11638	\$.29447	(\$.10846)	\$.00063	\$.30302	R	
SG-L	<u>Street and Outdoor Lighting Gas Service</u>							
	Commodity Charge per Therm:							
	All Usage	\$.33458	\$.29447	(\$.10846)	\$.00063	\$.52122	R	
SG-OS	<u>Optional Gas Service</u>							
		As specified on Sheet Nos. 48 through 51.						
SG-AS	<u>Alternative Sales Service</u>							
		As specified on Sheet Nos. 52 through 53.						

^{1/} The charges shown above are subject to adjustments for taxes and assessments.

^{2/} Customers taking transportation service will pay the Basic Service Charge, the Delivery Charge per therm, and Demand Charge, if applicable, of the Currently Effective Tariff Rate for each meter included in the transportation service agreement, plus an amount for distribution system shrinkage for all volumes of gas not delivered through a direct connection to one of the Company's upstream interstate pipelines. The high pressure shrinkage rate is \$.00000 per therm, and the low pressure shrinkage rate is \$.00000 per therm. Additionally customers will pay the Southwest Gas Transmission Company (SGTC) Annual Charge Adjustment (ACA) rate of \$.00013 per therm for all scheduled volumes that flow through the SGTC pipeline. The ACA Charge will also apply to applicable traded and imbalance volumes. Also, customers will pay the Conservation and Energy Efficiency rate of \$.01471 per therm. In addition, the customer will also pay a Transportation Service Charge of \$500.00 per month per individually qualifying premise. For purposes of calculating Payment for Excess Imbalances, the Imbalance Commodity Charge is \$.37446 per therm and the Imbalance Reservation Charge is \$.07705 per therm. For customers converting from sales service, an additional amount equal to the currently effective Deferred Energy Accounting Adjustment will be assessed for a period of twelve (12) months.

<p>Issued: November 30, 2016</p> <p>Effective: January 1, 2017</p> <p>Advice Letter No.: 502</p>	<p>Issued by Justin Lee Brown Vice President</p>
---	--

STATEMENT OF RATES
EFFECTIVE RATES APPLICABLE TO NORTHERN NEVADA SCHEDULES ^{1/2}

Schedule Number	Description	Delivery Charge ^{3/}	Gas Cost			Currently Effective Tariff Rate
			Base Tariff Energy Rate ^{4/}	Deferred Energy Account Adjustment	Renewable Energy Program Rate	
NG-RS	<u>Single-Family Residential Gas Service</u>					
	Basic Service Charge per Month	\$ 10.80				\$ 10.80
	Commodity Charge per Therm:					
	All Usage	\$.46742	\$.54128	(\$.09050)	(\$.00049)	\$.91771
NG-RM	<u>Multi-Family Residential Gas Service</u>					
	Basic Service Charge per Month	\$ 10.80				\$ 10.80
	Commodity Charge per Therm:					
	All Usage	\$.54513	\$.54128	(\$.09050)	(\$.00049)	\$.99542
NG-RAC	<u>Air Conditioning Residential Gas Service</u>					
	Basic Service Charge per Month	\$ 10.80				\$ 10.80
	Commodity Charge per Therm:					
	All Usage	\$.29781	\$.54128	(\$.09050)	(\$.00049)	\$.74810
NG-G1	<u>General Gas Service - 1</u>					
	Basic Service Charge per Month	\$ 28.80				\$ 28.80
	Commodity Charge per Therm:					
	All Usage	\$.39923	\$.54128	(\$.09050)	(\$.00049)	\$.84952
NG-G2	<u>General Gas Service - 2</u>					
	Basic Service Charge per Month	\$ 160.00				\$ 160.00
	Commodity Charge per Therm:					
	All Usage	\$.18516	\$.54128	(\$.09050)	(\$.00049)	\$.63545
NG-G3	<u>General Gas Service - 3</u>					
	Basic Service Charge per Month	\$ 350.00				\$ 350.00
	Commodity Charge per Therm:					
	All Usage	\$.08350	\$.54128	(\$.09050)	(\$.00049)	\$.53379
NG-G4	<u>General Gas Service - 4</u>					
	Basic Service Charge per Month	\$1,000.00				\$1,000.00
	Commodity Charge per Therm:					
	All Usage	\$.04026	\$.54128	(\$.09050)	(\$.00049)	\$.49055
	Demand Charge ^{5/}	\$.02400				\$.02400
NG-AC	<u>Air Conditioning Gas Service</u>					
	Basic Service Charge per Month	\$ 28.80				\$ 28.80
	Commodity Charge per Therm:					
	All Usage	\$.10686	\$.54128	(\$.09050)	(\$.00049)	\$.55715

<p>Issued:</p> <p align="center">November 30, 2016</p> <p>Effective:</p> <p align="center">January 1, 2017</p> <p>Advice Letter No.:</p> <p align="center">502</p>	<p>Issued by</p> <p>Justin Lee Brown</p> <p>Vice President</p>	
--	--	--

STATEMENT OF RATES
EFFECTIVE RATES APPLICABLE TO NORTHERN NEVADA SCHEDULES ^{1/2/}

Schedule Number	Description	Delivery Charge ^{3/}	Gas Cost			Currently Effective Tariff Rate
			Base Tariff Energy Rate ^{4/}	Deferred Energy Account Adjustment	Renewable Energy Program Rate	
NG-WP	<u>Water Pumping Gas Service</u>					
	Basic Service Charge per Month	\$ 36.00				\$ 36.00
	Commodity Charge per Therm:					
	All Usage	\$.15715	\$.54128	(\$.09050)	(\$.00049)	\$.60744
NG-EG	<u>Small Electric Generation Gas Service</u>					
	Basic Service Charge per Month	Otherwise Applicable Rate Schedule				
	Commodity Charge per Therm:					
	All Usage	\$.15898	\$.54128	(\$.09050)	(\$.00049)	\$.60927
NG-CNG	<u>Gas Service for Compression on Customer's Premises ^{6/}</u>					
	Basic Service Charge	\$ 25.80				\$ 25.80
	Commodity Charge per Therm:					
	All Usage	\$.13289	\$.54128	(\$.09050)	(\$.00049)	\$.58318
NG-L	<u>Street and Outdoor Lighting Gas Service</u>					
	Commodity Charge per Therm:					
	All Usage	\$.88116	\$.54128	(\$.09050)	(\$.00049)	\$ 1.33145
NG-OS	<u>Optional Gas Service</u>					
		As specified on Sheet Nos. 48 through 51.				
NG-AS	<u>Alternative Sales Service</u>					
		As specified on Sheet Nos. 52 through 53.				

^{1/} The charges shown above are subject to adjustments for taxes and assessments.

^{2/} Customers taking transportation service will pay the Basic Service Charge, the Delivery Charge per therm, and Demand Charge, if applicable, of the Currently Effective Tariff Rate for each meter included in the transportation service agreement, plus an amount of \$.00000 per therm for distribution system shrinkage as defined in Rule No. 1 of this Nevada Gas Tariff for all volumes of gas not delivered through a direct connection to one of the Company's upstream interstate pipelines, the Conservation and Energy Efficiency rate of \$.01492 per therm, and a Transportation Service Charge of \$500.00 per month per individually qualifying premise. For purposes of calculating Payment for Excess Imbalances, the Imbalance Commodity Charge is \$.36900 per therm and the Imbalance Reservation Charge is \$.33033 per therm. For customers converting from sales service, an additional amount equal to the currently effective Deferred Energy Accounting Adjustment will be assessed for a period of twelve (12) months.

<p>Issued: November 30, 2016</p> <p>Effective: January 1, 2017</p> <p>Advice Letter No.: 502</p>	<p align="center">Issued by Justin Lee Brown Vice President</p>
---	---

**SOUTHWEST GAS CORPORATION
SOUTHERN NEVADA**

PROPOSED ANNUALIZED CHANGE IN RATES AND REVENUE BY RATE SCHEDULE

Line No.	Description (a)	Rate Schedule (b)	Annual Number of Bills [1] (c)	Basic Service Charge (d)	Annual Volumes (Therms) [1] (e)	Currently Effective Rates [2] (f)	Proposed Tariff Rates (g)	Increase/ (Decrease) (h)	Total Revenue			Percent Change (i)
									Present (i)	Calculated (j)	Change (k)	
1	Single-Family Residential Gas Service	SG-RS	5,815,237	\$ 10.80					\$ 62,804,560	\$ 62,804,560		
2	All Usage				239,250,963	\$ 0.60825	\$ 0.58442	\$ (0.02383)	145,524,398	139,823,048	\$ (5,701,350)	-2.7%
3	Total								\$ 208,328,958	\$ 202,627,607	\$ (5,701,350)	-2.7%
4	Multi-Family Residential Gas Service	SG-RM	1,403,033	\$ 9.00					\$ 12,627,297	\$ 12,627,297		
5	All Usage				32,249,838	\$ 0.57660	\$ 0.55277	\$ (0.02383)	18,595,257	17,826,743	\$ (768,514)	-2.5%
6	Total								\$ 31,222,554	\$ 30,454,040	\$ (768,514)	-2.5%
7	Air Conditioning Residential Gas Service	SG-RAC	162	\$ 10.80					\$ 1,750	\$ 1,750		
8	All Usage				116,778	\$ 0.34417	\$ 0.32034	\$ (0.02383)	40,191	37,409	\$ (2,783)	-6.6%
9	Total								\$ 41,941	\$ 39,158	\$ (2,783)	-6.6%
10	General Gas Service - 1	SG-G1	219,768	\$ 25.80					\$ 5,670,014	\$ 5,670,014		
11	All Usage				26,657,821	\$ 0.62761	\$ 0.60378	\$ (0.02383)	16,730,715	16,095,459	\$ (635,256)	-2.8%
12	Total								\$ 22,400,729	\$ 21,765,474	\$ (635,256)	-2.8%
13	General Gas Service - 2	SG-G2	37,064	\$ 160.00					\$ 5,930,240	\$ 5,930,240		
14	All Usage				49,722,368	\$ 0.35289	\$ 0.32906	\$ (0.02383)	17,546,526	16,361,642	\$ (1,184,884)	-5.0%
15	Total								\$ 23,476,766	\$ 22,291,882	\$ (1,184,884)	-5.0%
16	General Gas Service - 3	SG-G3	2,679	\$ 350.00					\$ 937,650	\$ 937,650		
17	All Usage				17,917,532	\$ 0.31613	\$ 0.29230	\$ (0.02383)	5,664,269	5,237,295	\$ (426,975)	-6.5%
18	Total								\$ 6,601,919	\$ 6,174,945	\$ (426,975)	-6.5%
19	General Gas Service - 4	SG-G4	696	\$ 1,000.00					\$ 696,000	\$ 696,000		
20	All Usage				30,278,156	\$ 0.24983	\$ 0.22600	\$ (0.02383)	7,564,392	6,842,863	\$ (721,528)	-4.1%
21	Demand				234,090,780	0.03950	0.03950	0.00000	9,246,586	9,246,586		
22	Total								\$ 17,506,978	\$ 16,785,449	\$ (721,528)	-4.1%
23	Air Conditioning Gas Service								\$ 0	\$ 0		
24	General Gas Service - 1 (Seasonal)	SG-AC	40	\$ 0.00					4,505	4,134	\$ (371)	-8.2%
25	Summer				15,578	\$ 0.28922	\$ 0.26539	\$ (0.02383)	3,617	3,480	\$ (137)	-3.8%
26	Winter				5,763	0.62761	0.60378	(0.02383)	0	0		
27	General Gas Service - 2 (Seasonal)				22,926	\$ 0.28922	\$ 0.26539	\$ (0.02383)	6,631	6,084	\$ (547)	-8.2%
28	Summer				9,349	0.35289	0.32906	(0.02383)	3,299	3,076	\$ (223)	-6.8%
29	Winter								490	490		
30	Air Conditioning Gas Service (2nd Meter)				72,410	\$ 0.28922	\$ 0.26539	\$ (0.02383)	0	0		
31	Cooling								20,942	19,217	\$ (1,725)	-8.3%
32	All Usage								\$ 39,485	\$ 36,482	\$ (3,003)	-7.6%
	Total								\$ 39,485	\$ 36,482	\$ (3,003)	-7.6%

[1] Number of Bills and Sales for the twelve months ended September 2016.

[2] Rates approved in Advice Letter No. 501 effective October 1, 2016.

**SOUTHWEST GAS CORPORATION
SOUTHERN NEVADA
PROPOSED ANNUALIZED CHANGE IN RATES AND REVENUE BY RATE SCHEDULE**

Line No.	Description (a)	Rate Schedule (b)	Annual Number of Bills [1] (c)	Basic Service Charge (d)	Annual Volumes (Therms) [1] (e)	Currently Effective Rates [2] (f)	Proposed Tariff Rates (g)	Increase/ (Decrease) (h)	Total Revenue			
									Present (i)	Calculated (j)	Change (k)	Percent Change (l)
33	Water Pumping Gas Service	SG-WP	17	\$ 250.00					\$ 4,250	\$ 4,250		
34	All Usage				785,965	\$ 0.34302	\$ 0.31919	\$ (0.02383)	269,602	250,872		
35	Total								\$ 273,852	\$ 255,122	\$ (18,730)	-6.8%
36	Small Electric Generation Gas Service	SG-EG	0	\$ 0.00					\$ 0	\$ 0		
37	All Usage				0	\$ 0.28922	\$ 0.26539	\$ (0.02383)	0	0		
38	Total								\$ 0	\$ 0	0	0.0%
39	Gas Service for Compression on Customer's Premises	SG-CNG	72	\$ 25.80					\$ 1,858	\$ 1,858		
40	Residential Basic Service Charge		17	\$ 10.80					184	184		
41	All Usage				1,487,490	\$ 0.32685	\$ 0.30302	\$ (0.02383)	486,186	450,739		
42	Total								\$ 488,227	\$ 452,780	\$ (35,447)	-7.3%
43	Street and Outdoor Lighting Gas Service	SG-L	8,441									
44	All Usage				451,955	\$ 0.54505	\$ 0.52122	\$ (0.02383)	246,338	235,568		
45	Total								\$ 246,338	\$ 235,568	\$ (10,770)	-4.4%
46	Total Sales				<u>399,044,892</u>				<u>\$ 310,627,747</u>	<u>\$ 301,118,507</u>	<u>\$ (9,509,240)</u>	<u>-3.1%</u>

[1] Number of Bills and Sales for the twelve months ended September 2016.

[2] Rates approved in Advice Letter No. 501 effective October 1, 2016.

**SOUTHWEST GAS CORPORATION
NORTHERN NEVADA
PROPOSED ANNUALIZED CHANGE IN RATES AND REVENUE BY RATE SCHEDULE**

Line No.	Description (a)	Rate Schedule (b)	Annual Number of Bills [1] (c)	Basic Service Charge (d)	Annual Volumes (Therms) [1] (e)	Currently Effective Rates [2] (f)	Proposed Tariff Rates (g)	Increase/ (Decrease) (h)	Total Revenue			Percent Change (i)
									Present (j)	Proposed (j)	Change (k)	
1	Single-Family Residential Gas Service	NG-RS	841,879	\$ 10.80					\$ 9,092,293	\$ 9,092,293		
2	All Usage				50,764,327	\$ 0.88162	\$ 0.91771	\$ 0.03609	44,754,846	46,586,931		
3	Total								\$ 53,847,139	\$ 55,679,224	\$ 1,832,085	3.4%
4	Multi-Family Residential Gas Service	NG-RM	184,645	\$ 10.80					\$ 1,994,166	\$ 1,994,166		
5	All Usage				6,322,530	\$ 0.95933	\$ 0.99542	\$ 0.03609	6,065,393	6,293,573		
6	Total								\$ 8,059,559	\$ 8,287,739	\$ 228,180	2.8%
7	Air Conditioning Residential Gas Service	NG-RAC	36	\$ 10.80					\$ 389	\$ 389		
8	All Usage				2,967	\$ 0.71201	\$ 0.74810	\$ 0.03609	2,113	2,220		
9	Total								\$ 2,501	\$ 2,608	\$ 107	4.3%
10	General Gas Service - 1	NG-G1	91,436	\$ 28.80					\$ 2,633,357	\$ 2,633,357		
11	All Usage				11,346,821	\$ 0.81343	\$ 0.84952	\$ 0.03609	9,229,845	9,639,351		
12	Total								\$ 11,863,201	\$ 12,272,708	\$ 409,507	3.5%
13	General Gas Service - 2	NG-G2	8,614	\$ 160.00					\$ 1,378,240	\$ 1,378,240		
14	All Usage				11,856,752	\$ 0.59936	\$ 0.63545	\$ 0.03609	7,106,463	7,534,373		
15	Total								\$ 8,484,703	\$ 8,912,613	\$ 427,910	5.0%
16	General Gas Service - 3	NG-G3	803	\$ 350.00					\$ 281,050	\$ 281,050		
17	All Usage				5,543,609	\$ 0.49770	\$ 0.53379	\$ 0.03609	2,759,054	2,959,123		
18	Total								\$ 3,040,104	\$ 3,240,173	\$ 200,069	6.6%
19	General Gas Service - 4	NG-G4	209	\$ 1,000.00					\$ 209,000	\$ 209,000		
20	All Usage				5,294,123	\$ 0.45446	\$ 0.49055	\$ 0.03609	2,405,967	2,597,032		
21	Demand				21,476,520	0.02400	0.02400	0.00000	515,436	515,436		
22	Total								\$ 3,130,404	\$ 3,321,469	\$ 191,065	6.1%
23	Air Conditioning Gas Service	NG-AC	0	\$ 0.00					\$ 0	\$ 0		
24	Basic Service Charge		12	\$ 28.80					346	346		
25	All Usage				3,698	\$ 0.52106	\$ 0.55715	\$ 0.03609	1,927	2,060		
26	Total								\$ 2,272	\$ 2,406	\$ 133	5.9%

[1] Number of Bills and Sales for the twelve months ended September 2016.

[2] Rates approved in Advice Letter No. 501 effective October 1, 2016.

**SOUTHWEST GAS CORPORATION
NORTHERN NEVADA
PROPOSED ANNUALIZED CHANGE IN RATES AND REVENUE BY RATE SCHEDULE**

Line No.	Description (a)	Rate Schedule (b)	Annual Number of Bills [1] (c)	Basic Service Charge (d)	Annual Volumes (Therms) [1] (e)	Currently Effective Rates [2] (f)	Proposed Tariff Rates (g)	Increase/ (Decrease) (h)	Total Revenue			
									Present (i)	Proposed (j)	Change (k)	Percent Change (l)
27	Water Pumping Gas Service	NG-WP	24	\$ 36.00					\$ 864	\$ 864		
28	All Usage				4,101	\$ 0.57135	\$ 0.60744	\$ 0.03609	2,343	2,491		
29	Total								\$ 3,207	\$ 3,355	\$ 148	4.6%
Small Electric Generation Gas Service												
30	General Gas Service - 1 (NG-EG)	NG-EG	36	\$ 28.80					\$ 1,037	\$ 1,037		
31	General Gas Service - 2 (NG-EG)		12	\$ 160.00					1,920	1,920		
32	All Usage				47,812	\$ 0.57318	\$ 0.60927	\$ 0.03609	27,405	29,130		
33	Total								\$ 30,362	\$ 32,087	\$ 1,726	5.7%
Gas Service for Compression												
34	on Customer's Premises	NG-CNG	24	\$ 25.80					\$ 619	\$ 619		
35	Residential Basic Service Charge				454	\$ 0.54709	\$ 0.58318	\$ 0.03609	248	265		
36	All Usage								868	884	\$ 16	1.8%
37	Total											
38	Street and Outdoor Lighting Gas Service	NG-L	715						\$ 29,370	\$ 30,188		
39	All Usage				22,673	\$ 1.29536	\$ 1.33145	\$ 0.03609	\$ 29,370	\$ 30,188	\$ 818	2.8%
40	Total											
41	Total Sales				<u>91,209,867</u>				<u>\$ 88,493,690</u>	<u>\$ 91,785,454</u>	<u>\$ 3,291,764</u>	<u>3.7%</u>

[1] Number of Bills and Sales for the twelve months ended September 2016.

[2] Rates approved in Advice Letter No. 501 effective October 1, 2016.



Quarterly Gas Cost Rate Adjustment—Southern Nevada

Effective January 1, 2017, Southwest Gas Corporation is adjusting rates to reflect changes in the quarterly Gas Cost rate for Southern Nevada customers. The rate is composed of the Base Tariff Energy Rate (BTER) and the Deferred Energy Account Adjustment (DEAA). This rate is updated quarterly to account for changes in the cost of gas the Company purchased on behalf of its customers, with no profit to the Company.

The transactions and recorded cost of natural gas which are the basis for the quarterly rate adjustment will be reviewed for reasonableness and prudence in the next Annual Rate Adjustment proceeding. The result of this quarterly rate adjustment is a decrease in annualized revenue of \$9,509,240 or 3.1%.

The table on the back of this notice shows the change in an average monthly bill for each rate schedule. The change to individual customer bills will vary depending on the amount of gas consumed.

SW5742-SNV (12/2016)

SOUTHERN NEVADA RATE SCHEDULE			Avg. Monthly Change (\$)	Percentage Change
Single-Family Residential Gas Service	SG-RS		-0.98	-2.7%
Multi-Family Residential Gas Service	SG-RM		-0.55	-2.5%
Air Conditioning Residential Gas Service	SG-RAC		-17.18	-6.6%
General Gas Service-1	SG-G1		-2.89	-2.8%
General Gas Service-2	SG-G2		-31.97	-5.0%
General Gas Service-3	SG-G3		-159.38	-6.5%
General Gas Service-4	SG-G4		-1,036.68	-4.1%
Air Conditioning Gas Service	SG-AC		-22.75	-7.6%
Water Pumping Gas Service	SG-WP		-1,101.76	-6.8%
Gas Service for Compression on Customer's Premises	SG-CNG		-398.28	-7.3%
Street and Outdoor Lighting Gas Service	SG-L		-1.28	-4.4%

For additional information, please call customer assistance at the number listed on your bill. Customers may send written comments or protests to:

Public Utilities Commission of Nevada	or	Public Utilities Commission of Nevada
1150 East William Street		9075 West Diablo Drive, Suite 250
Carson City, NV 89701-3109		Las Vegas, NV 89148



Quarterly Gas Cost Rate Adjustment—Northern Nevada

Effective January 1, 2017, Southwest Gas Corporation is adjusting rates to reflect changes in the quarterly Gas Cost rate for Northern Nevada customers. The rate is composed of the Base Tariff Energy Rate (BTER) and the Deferred Energy Account Adjustment (DEAA). This rate is updated quarterly to account for changes in the cost of gas the Company purchased on behalf of its customers, with no profit to the Company.

The transactions and recorded cost of natural gas which are the basis for the quarterly rate adjustment will be reviewed for reasonableness and prudence in the next Annual Rate Adjustment proceeding. The result of this quarterly rate adjustment is an increase in annualized revenue of \$3,291,764 or 3.7%.

The table on the back of this notice shows the change in an average monthly bill for each rate schedule. The change to individual customer bills will vary depending on the amount of gas consumed.

SW5741-NNV (12/2016)

NORTHERN NEVADA RATE SCHEDULE			Avg. Monthly Change (\$)	Percentage Change
Single-Family Residential Gas Service	NG-RS		2.18	3.4%
Multi-Family Residential Gas Service	NG-RM		1.24	2.8%
Air Conditioning Residential Gas Service	NG-RAC		2.97	4.3%
General Gas Service-1	NG-G1		4.48	3.5%
General Gas Service-2	NG-G2		49.68	5.0%
General Gas Service-3	NG-G3		249.15	6.6%
General Gas Service-4	NG-G4		914.19	6.1%
Air Conditioning Gas Service	NG-AC		11.08	5.9%
Water Pumping Gas Service	NG-WP		6.17	4.6%
Small Electric Generation Gas Service	NG-EG		35.96	5.7%
Gas Service for Compression on Customer's Premises	NG-CNG		0.67	1.8%
Street and Outdoor Lighting Gas Service	NG-L		1.14	2.8%

For additional information, please call customer assistance at the number listed on your bill. Customers may send written comments or protests to:

Public Utilities Commission of Nevada Public Utilities Commission of Nevada
 1150 East William Street or 9075 West Diablo Drive, Suite 250
 Carson City, NV 89701-3109 Las Vegas, NV 89148