



BRIAN SANDOVAL
Governor

STATE OF NEVADA
PUBLIC UTILITIES COMMISSION

JOSEPH C. REYNOLDS
Chairman
PAUL A. THOMSEN
Commissioner
ANN C. PONGRACZ
Commissioner
STEPHANIE MULLEN
Executive Director

March 28, 2017

Southwest Gas Corporation
PO Box 98510
Las Vegas, NV 89193

RE: Docket No.: 17-02047
Southwest Gas Corporation filed Notice under Advice Letter No. 503 to adjust Northern and Southern Nevada Base Tariff Energy Rates and Deferred Energy Account Adjustment Rates effective April 1, 2017.

To Whom It May Concern:

With reference to the above-captioned docket, enclosed is a copy of the tariff sheets which were accepted for filing by the Public Utilities Commission of Nevada, effective April 1, 2017. Staff has reviewed the tariff sheets and believes that they are consistent with the Commission's Order.

Sincerely,

A handwritten signature in cursive script that reads "Liz Biasotti".

Liz Biasotti
Administrative Assistant III

Enclosure(s)

cc: PUC Master File

STATEMENT OF RATES
EFFECTIVE RATES APPLICABLE TO SOUTHERN NEVADA SCHEDULES ^{1/2/}

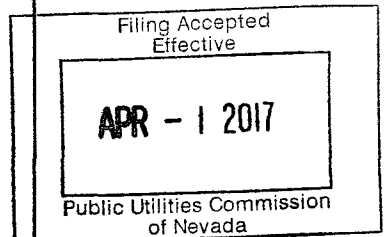
Schedule Number	Description	Delivery Charge ^{3/}	Gas Cost		Renewable Energy Program Rate	Currently Effective Tariff Rate
			Base Tariff Energy Rate ^{4/}	Deferred Energy Account Adjustment		
SG-RS	<u>Single-Family Residential Gas Service</u>					
	Basic Service Charge per Month	\$ 10.80				\$ 10.80
	Commodity Charge per Therm:					
	All Usage	\$.35663	\$.31876	(\$.12714)	(\$.00368)	\$.54457
SG-RM	<u>Multi-Family Residential Gas Service</u>					
	Basic Service Charge per Month	\$ 9.00				\$ 9.00
	Commodity Charge per Therm:					
	All Usage	\$.33717	\$.31876	(\$.12714)	(\$.00368)	\$.52511
SG-RAC	<u>Air Conditioning Residential Gas Service</u>					
	Basic Service Charge per Month	\$ 10.80				\$ 10.80
	Commodity Charge per Therm:					
	All Usage	\$.13267	\$.31876	(\$.12714)	(\$.00368)	\$.32061
SG-G1	<u>General Gas Service - 1</u>					
	Basic Service Charge per Month	\$ 25.80				\$ 25.80
	Commodity Charge per Therm:					
	All Usage	\$.36028	\$.31876	(\$.12714)	(\$.00368)	\$.54822
SG-G2	<u>General Gas Service - 2</u>					
	Basic Service Charge per Month	\$ 160.00				\$ 160.00
	Commodity Charge per Therm:					
	All Usage	\$.13706	\$.31876	(\$.12714)	(\$.00368)	\$.32500
SG-G3	<u>General Gas Service - 3</u>					
	Basic Service Charge per Month	\$ 350.00				\$ 350.00
	Commodity Charge per Therm:					
	All Usage	\$.11106	\$.31876	(\$.12714)	(\$.00368)	\$.29900
SG-G4	<u>General Gas Service - 4</u>					
	Basic Service Charge per Month	\$1,000.00				\$1,000.00
	Commodity Charge per Therm:					
	All Usage	\$.03833	\$.31876	(\$.12714)	(\$.00368)	\$.22627
	Demand Charge ^{5/}	\$.03950				\$.03950
SG-AC	<u>Air Conditioning Gas Service</u>					
	Basic Service Charge per Month	\$ 25.80				\$ 25.80
	Commodity Charge per Therm:					
	All Usage	\$.07772	\$.31876	(\$.12714)	(\$.00368)	\$.26566

Issued:
February 28, 2017

Effective:
April 1, 2017

Advice Letter No.:
503

Issued by
Justin Lee Brown
Vice President



STATEMENT OF RATES
EFFECTIVE RATES APPLICABLE TO SOUTHERN NEVADA SCHEDULES ^{1/2/}

Schedule Number	Description	Delivery Charge ^{3/}	Gas Cost			Currently Effective Tariff Rate
			Base Tariff Energy Rate ^{4/}	Deferred Energy Account Adjustment	Renewable Energy Program Rate	
SG-WP	<u>Water Pumping Gas Service</u>					
	Basic Service Charge per Month	\$ 250.00				\$ 250.00
	Commodity Charge per Therm:					
	All Usage	\$.13152	\$.31876	(\$.12714)	(\$.00368)	\$.31946
SG-EG	<u>Small Electric Generation Gas Service</u>					
	Basic Service Charge per Month	Otherwise Applicable Rate Schedule				
	Commodity Charge per Therm:					
	All Usage	\$.07772	\$.31876	(\$.12714)	(\$.00368)	\$.26566
SG-CNG	<u>Gas Service for Compression on Customer's Premises ^{6/}</u>					
	Basic Service Charge per Month	\$ 25.80				\$ 25.80
	Commodity Charge per Therm:					
	All Usage	\$.11535	\$.31876	(\$.12714)	(\$.00368)	\$.30329
SG-L	<u>Street and Outdoor Lighting Gas Service</u>					
	Commodity Charge per Therm:					
	All Usage	\$.33355	\$.31876	(\$.12714)	(\$.00368)	\$.52149
SG-OS	<u>Optional Gas Service</u>					
		As specified on Sheet Nos. 48 through 51.				
SG-AS	<u>Alternative Sales Service</u>					
		As specified on Sheet Nos. 52 through 53.				

^{1/} The charges shown above are subject to adjustments for taxes and assessments.

^{2/} Customers taking transportation service will pay the Basic Service Charge, the Delivery Charge per therm, and Demand Charge, if applicable, of the Currently Effective Tariff Rate for each meter included in the transportation service agreement, plus an amount for distribution system shrinkage for all volumes of gas not delivered through a direct connection to one of the Company's upstream interstate pipelines. The high pressure shrinkage rate is \$.00000 per therm, and the low pressure shrinkage rate is \$.00000 per therm. Additionally customers will pay the Southwest Gas Transmission Company (SGTC) Annual Charge Adjustment (ACA) rate of \$.00013 per therm for all scheduled volumes that flow through the SGTC pipeline. The ACA Charge will also apply to applicable traded and imbalance volumes. Also, customers will pay the Conservation and Energy Efficiency rate of \$.01494 per therm. In addition, the customer will also pay a Transportation Service Charge of \$500.00 per month per individually qualifying premise. For purposes of calculating Payment for Excess Imbalances, the Imbalance Commodity Charge is \$.22858 per therm and the Imbalance Reservation Charge is \$.07358 per therm. For customers converting from sales service, an additional amount equal to the currently effective Deferred Energy Accounting Adjustment will be assessed for a period of twelve (12) months.

<p>Issued: February 28, 2017</p> <p>Effective: April 1, 2017</p> <p>Advice Letter No.: 503</p>	<p>Issued by Justin Lee Brown Vice President</p>	<div style="border: 1px solid black; padding: 5px;"> <p>Filing Accepted Effective</p> <div style="border: 1px solid black; padding: 5px; margin: 5px 0;"> <p>APR - 1 2017</p> </div> <p>Public Utilities Commission of Nevada</p> </div>
---	--	---

STATEMENT OF RATES
EFFECTIVE RATES APPLICABLE TO NORTHERN NEVADA SCHEDULES ^{1/2}

Schedule Number	Description	Delivery Charge ^{3/}	Gas Cost			Renewable Energy Program Rate	Currently Effective Tariff Rate
			Base Tariff Energy Rate ^{4/}	Deferred Energy Account Adjustment			
NG-RS	Single-Family Residential Gas Service						
	Basic Service Charge per Month	\$ 10.80					\$ 10.80
	Commodity Charge per Therm:						
	All Usage	\$.39499	\$.58938	\$.00000	(\$.00253)		\$.98184
NG-RM	Multi-Family Residential Gas Service						
	Basic Service Charge per Month	\$ 10.80					\$ 10.80
	Commodity Charge per Therm:						
	All Usage	\$.45227	\$.58938	\$.00000	(\$.00253)		\$ 1.03912
NG-RAC	Air Conditioning Residential Gas Service						
	Basic Service Charge per Month	\$ 10.80					\$ 10.80
	Commodity Charge per Therm:						
	All Usage	\$.28286	\$.58938	\$.00000	(\$.00253)		\$.86971
NG-G1	General Gas Service - 1						
	Basic Service Charge per Month	\$ 28.80					\$ 28.80
	Commodity Charge per Therm:						
	All Usage	\$.29958	\$.58938	\$.00000	(\$.00253)		\$.88643
NG-G2	General Gas Service - 2						
	Basic Service Charge per Month	\$ 160.00					\$ 160.00
	Commodity Charge per Therm:						
	All Usage	\$.14059	\$.58938	\$.00000	(\$.00253)		\$.72744
NG-G3	General Gas Service - 3						
	Basic Service Charge per Month	\$ 350.00					\$ 350.00
	Commodity Charge per Therm:						
	All Usage	\$.05857	\$.58938	\$.00000	(\$.00253)		\$.64542
NG-G4	General Gas Service - 4						
	Basic Service Charge per Month	\$1,000.00					\$1,000.00
	Commodity Charge per Therm:						
	All Usage	\$.02531	\$.58938	\$.00000	(\$.00253)		\$.61216
	Demand Charge ^{5/}	\$.02400					\$.02400
NG-AC	Air Conditioning Gas Service						
	Basic Service Charge per Month	\$ 28.80					\$ 28.80
	Commodity Charge per Therm:						
	All Usage	\$.09191	\$.58938	\$.00000	(\$.00253)		\$.67876

Issued:
February 28, 2017

Effective:
April 1, 2017

Advice Letter No.:
503

Issued by
Justin Lee Brown
Vice President

Filing Accepted
Effective

APR - 1 2017

Public Utilities Commission
of Nevada

STATEMENT OF RATES
EFFECTIVE RATES APPLICABLE TO NORTHERN NEVADA SCHEDULES ^{1/2/}

Schedule Number	Description	Delivery Charge ^{3/}	Gas Cost			Renewable Energy Program Rate	Currently Effective Tariff Rate
			Base Tariff Energy Rate ^{4/}	Deferred Energy Account Adjustment			
NG-WP	<u>Water Pumping Gas Service</u>						
	Basic Service Charge per Month	\$ 36.00					\$ 36.00
	Commodity Charge per Therm:						
	All Usage	\$.14220	\$.58938	\$.00000	(\$.00253)		\$.72905
NG-EG	<u>Small Electric Generation Gas Service</u>						
	Basic Service Charge per Month	Otherwise Applicable Rate Schedule					
	Commodity Charge per Therm:						
	All Usage	\$.14403	\$.58938	\$.00000	(\$.00253)		\$.73088
	Gas Service for Compression on Customer's Premises ^{6/}						
NG-CNG	<u>Basic Service Charge</u>	\$ 25.80					\$ 25.80
	Commodity Charge per Therm:						
	All Usage	\$.11794	\$.58938	\$.00000	(\$.00253)		\$.70479
NG-L	<u>Street and Outdoor Lighting Gas Service</u>						
	Commodity Charge per Therm:						
	All Usage	\$.86621	\$.58938	\$.00000	(\$.00253)		\$ 1.45306
NG-OS	<u>Optional Gas Service</u>						
		As specified on Sheet Nos. 48 through 51.					
NG-AS	<u>Alternative Sales Service</u>						
		As specified on Sheet Nos. 52 through 53.					

^{1/} The charges shown above are subject to adjustments for taxes and assessments.

^{2/} Customers taking transportation service will pay the Basic Service Charge, the Delivery Charge per therm, and Demand Charge, if applicable, of the Currently Effective Tariff Rate for each meter included in the transportation service agreement, plus an amount of \$.00000 per therm for distribution system shrinkage as defined in Rule No. 1 of this Nevada Gas Tariff for all volumes of gas not delivered through a direct connection to one of the Company's upstream interstate pipelines, the Conservation and Energy Efficiency rate of \$.00875 per therm, and a Transportation Service Charge of \$500.00 per month per individually qualifying premise. For purposes of calculating Payment for Excess Imbalances, the Imbalance Commodity Charge is \$.22553 per therm and the Imbalance Reservation Charge is \$.31216 per therm. For customers converting from sales service, an additional amount equal to the currently effective Deferred Energy Accounting Adjustment will be assessed for a period of twelve (12) months.

<p>Issued: February 28, 2017</p> <p>Effective: April 1, 2017</p> <p>Advice Letter No.: 503</p>	<p>Issued by Justin Lee Brown Vice President</p>	<p>Filing Accepted Effective</p> <div style="border: 1px solid black; padding: 5px; display: inline-block;"> <p>APR - 1 2017</p> </div> <p>Public Utilities Commission of Nevada</p>
---	--	---



SOUTHWEST GAS CORPORATION

February 28, 2017

Ms. Breanne Potter
Commission Secretary
Public Utilities Commission of Nevada
1150 East William Street
Carson City, NV 89701-3109

Dear Ms. Potter:

Southwest Gas Corporation herewith submits for filing Advice Letter No. 503. The workpapers to support the calculations contained in this filing are being provided under separate cover to Regulatory Operations Staff and the Bureau of Consumer Protection.

Communications regarding this Advice Letter should be directed to:

Ed Giesecking
Director/Regulation & Energy Efficiency
Southwest Gas Corporation
P.O. Box 98510
Las Vegas, NV 89193-8510
Telephone: 702-364-3271
E-mail: ed.giesecking@swgas.com

Amy L. Timperley
Regulatory Manager/Nevada
Southwest Gas Corporation
P.O. Box 98510
Las Vegas, NV 89193-8510
Telephone: 702-876-7266
E-mail: amy.timperley@swgas.com

Respectfully submitted,

Amy L. Timperley
Regulatory Manager/Nevada

Enclosures

c: Eric Witkoski, BCP
Anne-Marie Cuneo, PUCN



SOUTHWEST GAS CORPORATION

Advice Letter No. 503

February 28, 2017

PUBLIC UTILITIES COMMISSION OF NEVADA

Southwest Gas Corporation tenders herewith for filing the following tariff sheets applicable to its Nevada Gas Tariff No. 7:

Proposed PUCN Sheet No.

40th Revised Sheet No. 10
40th Revised Sheet No. 11
39th Revised Sheet No. 12
39th Revised Sheet No. 13

Supersedes PUCN Sheet No.

39th Revised Sheet No. 10
39th Revised Sheet No. 11
38th Revised Sheet No. 12
38th Revised Sheet No. 13

The purpose of this filing is to adjust rates to reflect the change in the quarterly Gas Cost rate, effective April 1, 2017. The quarterly Gas Cost rate includes two components, the Base Tariff Energy Rate (BTER) and the Deferred Energy Account Adjustment (DEAA).

In Southern Nevada, the BTER will increase by \$0.02689 per therm, and the DEAA will decrease by \$0.01868 per therm. As such, the overall change in the Southern Nevada Gas Cost rate will be an increase of \$0.00821 per therm. This results in an increase in annualized revenue of \$3,176,990. The calculation of Southern Nevada's annualized revenue change is attached in Schedule 1.

In Northern Nevada, the BTER will increase by \$0.04797 per therm. The DEAA will increase by \$0.09050 per therm to a rate of zero cents per therm as the deferred balance is less than 5 percent of the twelve month purchased gas costs in accordance with NRS 704.110(8). As such, the overall change in the Northern Nevada Gas Cost rate will be an increase of \$0.13847 per therm. This results in an increase in annualized revenue of \$12,358,309. The calculation of Northern Nevada's annualized revenue change is attached in Schedule 2.

Customers are being notified of the rate changes by means of a bill insert included with each bill beginning approximately March 1, 2017. Copies of the bill inserts are attached.

This filing is made in accordance with the Nevada Administrative Code, NAC Chapter 703, of the Commission's Rules of Practice and Procedure.

Respectfully submitted,
SOUTHWEST GAS CORPORATION

By


Justin Lee Brown

SOUTHWEST GAS CORPORATION

P.O. Box 98510

Las Vegas, Nevada 89193-8510

Nevada Gas Tariff No. 7

40th Revised P.U.C.N. Sheet No. 10
 Canceling 39th Revised P.U.C.N. Sheet No. 10

STATEMENT OF RATES
EFFECTIVE RATES APPLICABLE TO SOUTHERN NEVADA SCHEDULES ^{1/2/}

Schedule Number	Description	Delivery Charge ^{3/}	Gas Cost			Currently Effective Tariff Rate
			Base Tariff Energy Rate ^{4/}	Deferred Energy Account Adjustment	Renewable Energy Program Rate	
<u>SG-RS</u>	<u>Single-Family Residential Gas Service</u>					
	Basic Service Charge per Month	\$ 10.80				\$ 10.80
	Commodity Charge per Therm:					
	All Usage	\$.35663	\$.31876	(\$.12714)	(\$.00368)	\$.54457
<u>SG-RM</u>	<u>Multi-Family Residential Gas Service</u>					
	Basic Service Charge per Month	\$ 9.00				\$ 9.00
	Commodity Charge per Therm:					
	All Usage	\$.33717	\$.31876	(\$.12714)	(\$.00368)	\$.52511
<u>SG-RAC</u>	<u>Air Conditioning Residential Gas Service</u>					
	Basic Service Charge per Month	\$ 10.80				\$ 10.80
	Commodity Charge per Therm:					
	All Usage	\$.13267	\$.31876	(\$.12714)	(\$.00368)	\$.32061
<u>SG-G1</u>	<u>General Gas Service - 1</u>					
	Basic Service Charge per Month	\$ 25.80				\$ 25.80
	Commodity Charge per Therm:					
	All Usage	\$.36028	\$.31876	(\$.12714)	(\$.00368)	\$.54822
<u>SG-G2</u>	<u>General Gas Service - 2</u>					
	Basic Service Charge per Month	\$ 160.00				\$ 160.00
	Commodity Charge per Therm:					
	All Usage	\$.13706	\$.31876	(\$.12714)	(\$.00368)	\$.32500
<u>SG-G3</u>	<u>General Gas Service - 3</u>					
	Basic Service Charge per Month	\$ 350.00				\$ 350.00
	Commodity Charge per Therm:					
	All Usage	\$.11106	\$.31876	(\$.12714)	(\$.00368)	\$.29900
<u>SG-G4</u>	<u>General Gas Service - 4</u>					
	Basic Service Charge per Month	\$1,000.00				\$1,000.00
	Commodity Charge per Therm:					
	All Usage	\$.03833	\$.31876	(\$.12714)	(\$.00368)	\$.22627
	Demand Charge ^{5/}	\$.03950				\$.03950
<u>SG-AC</u>	<u>Air Conditioning Gas Service</u>					
	Basic Service Charge per Month	\$ 25.80				\$ 25.80
	Commodity Charge per Therm:					
	All Usage	\$.07772	\$.31876	(\$.12714)	(\$.00368)	\$.26566

Issued:
February 28, 2017

Effective:
April 1, 2017

Advice Letter No.:
503

Issued by
Justin Lee Brown
Vice President

STATEMENT OF RATES
EFFECTIVE RATES APPLICABLE TO SOUTHERN NEVADA SCHEDULES ^{1/2/}

Schedule Number	Description	Delivery Charge ^{3/}	Gas Cost			Currently Effective Tariff Rate
			Base Tariff Energy Rate ^{4/}	Deferred Energy Account Adjustment	Renewable Energy Program Rate	
SG-WP	<u>Water Pumping Gas Service</u>					
	Basic Service Charge per Month	\$ 250.00				\$ 250.00
	Commodity Charge per Therm:					
	All Usage	\$.13152	\$.31876	(\$.12714)	(\$.00368)	\$.31946
SG-EG	<u>Small Electric Generation Gas Service</u>					
	Basic Service Charge per Month	Otherwise Applicable Rate Schedule				
	Commodity Charge per Therm:					
	All Usage	\$.07772	\$.31876	(\$.12714)	(\$.00368)	\$.26566
SG-CNG	<u>Gas Service for Compression on Customer's Premises ^{6/}</u>					
	Basic Service Charge per Month	\$ 25.80				\$ 25.80
	Commodity Charge per Therm:					
	All Usage	\$.11535	\$.31876	(\$.12714)	(\$.00368)	\$.30329
SG-L	<u>Street and Outdoor Lighting Gas Service</u>					
	Commodity Charge per Therm:					
	All Usage	\$.33355	\$.31876	(\$.12714)	(\$.00368)	\$.52149
SG-OS	<u>Optional Gas Service</u>					
		As specified on Sheet Nos. 48 through 51.				
SG-AS	<u>Alternative Sales Service</u>					
		As specified on Sheet Nos. 52 through 53.				

^{1/} The charges shown above are subject to adjustments for taxes and assessments.

^{2/} Customers taking transportation service will pay the Basic Service Charge, the Delivery Charge per therm, and Demand Charge, if applicable, of the Currently Effective Tariff Rate for each meter included in the transportation service agreement, plus an amount for distribution system shrinkage for all volumes of gas not delivered through a direct connection to one of the Company's upstream interstate pipelines. The high pressure shrinkage rate is \$.00000 per therm, and the low pressure shrinkage rate is \$.00000 per therm. Additionally customers will pay the Southwest Gas Transmission Company (SGTC) Annual Charge Adjustment (ACA) rate of \$.00013 per therm for all scheduled volumes that flow through the SGTC pipeline. The ACA Charge will also apply to applicable traded and imbalance volumes. Also, customers will pay the Conservation and Energy Efficiency rate of \$.01494 per therm. In addition, the customer will also pay a Transportation Service Charge of \$500.00 per month per individually qualifying premise. For purposes of calculating Payment for Excess Imbalances, the Imbalance Commodity Charge is \$.22858 per therm and the Imbalance Reservation Charge is \$.07358 per therm. For customers converting from sales service, an additional amount equal to the currently effective Deferred Energy Accounting Adjustment will be assessed for a period of twelve (12) months.

<p>Issued:</p> <p align="center">February 28, 2017</p> <p>Effective:</p> <p align="center">April 1, 2017</p> <p>Advice Letter No.:</p> <p align="center">503</p>	<p>Issued by</p> <p>Justin Lee Brown</p> <p>Vice President</p>	
--	--	--

STATEMENT OF RATES
EFFECTIVE RATES APPLICABLE TO NORTHERN NEVADA SCHEDULES ^{1/2}

Schedule Number	Description	Delivery Charge ^{3/}	Gas Cost			Currently Effective Tariff Rate
			Base Tariff Energy Rate ^{4/}	Deferred Energy Account Adjustment	Renewable Energy Program Rate	
<u>NG-RS</u>	<u>Single-Family Residential Gas Service</u>					
	Basic Service Charge per Month	\$ 10.80				\$ 10.80
	Commodity Charge per Therm:					
	All Usage	\$.39499	\$.58938	\$.00000	(\$.00253)	\$.98184
<u>NG-RM</u>	<u>Multi-Family Residential Gas Service</u>					
	Basic Service Charge per Month	\$ 10.80				\$ 10.80
	Commodity Charge per Therm:					
	All Usage	\$.45227	\$.58938	\$.00000	(\$.00253)	\$ 1.03912
<u>NG-RAC</u>	<u>Air Conditioning Residential Gas Service</u>					
	Basic Service Charge per Month	\$ 10.80				\$ 10.80
	Commodity Charge per Therm:					
	All Usage	\$.28286	\$.58938	\$.00000	(\$.00253)	\$.86971
<u>NG-G1</u>	<u>General Gas Service - 1</u>					
	Basic Service Charge per Month	\$ 28.80				\$ 28.80
	Commodity Charge per Therm:					
	All Usage	\$.29958	\$.58938	\$.00000	(\$.00253)	\$.88643
<u>NG-G2</u>	<u>General Gas Service - 2</u>					
	Basic Service Charge per Month	\$ 160.00				\$ 160.00
	Commodity Charge per Therm:					
	All Usage	\$.14059	\$.58938	\$.00000	(\$.00253)	\$.72744
<u>NG-G3</u>	<u>General Gas Service - 3</u>					
	Basic Service Charge per Month	\$ 350.00				\$ 350.00
	Commodity Charge per Therm:					
	All Usage	\$.05857	\$.58938	\$.00000	(\$.00253)	\$.64542
<u>NG-G4</u>	<u>General Gas Service - 4</u>					
	Basic Service Charge per Month	\$1,000.00				\$1,000.00
	Commodity Charge per Therm:					
	All Usage	\$.02531	\$.58938	\$.00000	(\$.00253)	\$.61216
	Demand Charge ^{5/}	\$.02400				\$.02400
<u>NG-AC</u>	<u>Air Conditioning Gas Service</u>					
	Basic Service Charge per Month	\$ 28.80				\$ 28.80
	Commodity Charge per Therm:					
	All Usage	\$.09191	\$.58938	\$.00000	(\$.00253)	\$.67876

Issued:
February 28, 2017

Effective:
April 1, 2017

Advice Letter No.:
503

Issued by
Justin Lee Brown
Vice President

STATEMENT OF RATES
EFFECTIVE RATES APPLICABLE TO NORTHERN NEVADA SCHEDULES ^{1/2/}

Schedule Number	Description	Delivery Charge ^{3/}	Gas Cost			Currently Effective Tariff Rate
			Base Tariff Energy Rate ^{4/}	Deferred Energy Account Adjustment	Renewable Energy Program Rate	
NG-WP	<u>Water Pumping Gas Service</u>					
	Basic Service Charge per Month	\$ 36.00				\$ 36.00
	Commodity Charge per Therm:					
	All Usage	\$.14220	\$.58938	\$.00000	(\$.00253)	\$.72905
NG-EG	<u>Small Electric Generation Gas Service</u>					
	Basic Service Charge per Month	Otherwise Applicable Rate Schedule				
	Commodity Charge per Therm:					
	All Usage	\$.14403	\$.58938	\$.00000	(\$.00253)	\$.73088
NG-CNG	<u>Gas Service for Compression on Customer's Premises ^{6/}</u>					
	Basic Service Charge	\$ 25.80				\$ 25.80
	Commodity Charge per Therm:					
	All Usage	\$.11794	\$.58938	\$.00000	(\$.00253)	\$.70479
NG-L	<u>Street and Outdoor Lighting Gas Service</u>					
	Commodity Charge per Therm:					
	All Usage	\$.86621	\$.58938	\$.00000	(\$.00253)	\$ 1.45306
NG-OS	<u>Optional Gas Service</u>					
		As specified on Sheet Nos. 48 through 51.				
NG-AS	<u>Alternative Sales Service</u>					
		As specified on Sheet Nos. 52 through 53.				

^{1/} The charges shown above are subject to adjustments for taxes and assessments.

^{2/} Customers taking transportation service will pay the Basic Service Charge, the Delivery Charge per therm, and Demand Charge, if applicable, of the Currently Effective Tariff Rate for each meter included in the transportation service agreement, plus an amount of \$.00000 per therm for distribution system shrinkage as defined in Rule No. 1 of this Nevada Gas Tariff for all volumes of gas not delivered through a direct connection to one of the Company's upstream interstate pipelines, the Conservation and Energy Efficiency rate of \$.00875 per therm, and a Transportation Service Charge of \$500.00 per month per individually qualifying premise. For purposes of calculating Payment for Excess Imbalances, the Imbalance Commodity Charge is \$.22553 per therm and the Imbalance Reservation Charge is \$.31216 per therm. For customers converting from sales service, an additional amount equal to the currently effective Deferred Energy Accounting Adjustment will be assessed for a period of twelve (12) months.

Issued:
February 28, 2017

Effective:
April 1, 2017

Advice Letter No.:
503

Issued by
Justin Lee Brown
Vice President

**SOUTHWEST GAS CORPORATION
SOUTHERN NEVADA
PROPOSED ANNUALIZED CHANGE IN RATES AND REVENUE BY RATE SCHEDULE**

Line No.	Description (a)	Rate Schedule (b)	Annual Number of Bills [1] (c)	Basic Service Charge (d)	Annual Volumes (Therms) [1] (e)	Currently Effective Rates [2] (f)	Proposed Tariff Rates (g)	Increase/ (Decrease) (h)	Total Revenue			
									Present (i)	Calculated (j)	Change (k)	Percent Change (l)
1	Single-Family Residential Gas Service	SG-RS	5,843,164	\$ 10.80	228,556,387	\$ 0.53636	\$ 0.54457	\$ 0.00821	\$ 63,106,171	\$ 63,106,171	\$ 0	0.0%
2	All Usage								122,588,504	124,464,952	1,876,448	1.0%
3	Total								\$ 185,694,675	\$ 187,571,123	\$ 1,876,448	1.0%
4	Multi-Family Residential Gas Service	SG-RM	1,409,683	\$ 9.00	31,585,449	\$ 0.51690	\$ 0.52511	\$ 0.00821	\$ 12,687,147	\$ 12,687,147	\$ 0	0.0%
5	All Usage								16,326,519	16,585,835	259,317	0.9%
6	Total								\$ 29,013,666	\$ 29,272,982	\$ 259,317	0.9%
7	Air Conditioning Residential Gas Service	SG-RAC	148	\$ 10.80	111,807	\$ 0.31240	\$ 0.32061	\$ 0.00821	\$ 1,598	\$ 1,598	\$ 0	0.0%
8	All Usage								34,929	35,846	918	2.5%
9	Total								\$ 36,527	\$ 37,445	\$ 918	2.5%
10	General Gas Service - 1	SG-G1	219,989	\$ 25.80	25,506,348	\$ 0.54001	\$ 0.54822	\$ 0.00821	\$ 5,675,716	\$ 5,675,716	\$ 0	0.0%
11	All Usage								13,773,683	13,983,090	209,407	1.1%
12	Total								\$ 19,449,399	\$ 19,658,806	\$ 209,407	1.1%
13	General Gas Service - 2	SG-G2	37,766	\$ 160.00	49,184,150	\$ 0.31679	\$ 0.32500	\$ 0.00821	\$ 6,042,560	\$ 6,042,560	\$ 0	0.0%
14	All Usage								15,581,047	15,984,849	403,802	1.9%
15	Total								\$ 21,623,607	\$ 22,027,409	\$ 403,802	1.9%
16	General Gas Service - 3	SG-G3	2,820	\$ 350.00	18,624,265	\$ 0.29079	\$ 0.29900	\$ 0.00821	\$ 987,000	\$ 987,000	\$ 0	0.0%
17	All Usage								5,415,750	5,568,655	152,905	2.4%
18	Total								\$ 6,402,750	\$ 6,555,655	\$ 152,905	2.4%
19	General Gas Service - 4	SG-G4	705	\$ 1,000.00	30,661,306	\$ 0.21806	\$ 0.22627	\$ 0.00821	\$ 705,000	\$ 705,000	\$ 0	0.0%
20	All Usage								6,686,004	6,937,734	251,729	1.5%
21	Demand				233,927,724	0.03950	0.03950	0.00000	9,240,145	9,240,145	0	0.0%
22	Total								\$ 16,631,149	\$ 16,882,879	\$ 251,729	1.5%
23	Air Conditioning Gas Service	SG-AC	43	\$ 0.00	15,289	\$ 0.25745	\$ 0.26566	\$ 0.00821	\$ 0	\$ 0	\$ 0	0.0%
24	General Gas Service - 1 (Seasonal)								3,936	4,062	126	0.0%
25	Summer				5,534	0.54001	0.54822	0.00821	2,988	3,034	46	0.0%
26	Winter								0	0	0	0.0%
27	General Gas Service - 2 (Seasonal)								5,792	5,977	185	0.0%
28	Summer				22,498	0.25745	0.26566	0.00821	2,930	3,006	76	0.0%
29	Winter				9,250	0.31679	0.32500	0.00821	490	490	0	0.0%
30	Air Conditioning Gas Service (2nd Meter Cooling)								0	0	0	0.0%
31	All Usage				92,966	\$ 0.25745	\$ 0.26566	\$ 0.00821	23,934	24,697	763	0.0%
32	Total								\$ 40,071	\$ 41,266	\$ 1,195	3.0%

[1] Number of Bills and Sales for the twelve months ended December 2016.

[2] Rates approved in Advice Letter No. 502 effective January 1, 2017.

**SOUTHWEST GAS CORPORATION
SOUTHERN NEVADA
PROPOSED ANNUALIZED CHANGE IN RATES AND REVENUE BY RATE SCHEDULE**

Line No.	Description (a)	Rate Schedule (b)	Annual Number of Bills [1] (c)	Basic Service Charge (d)	Annual Volumes (Therms) [1] (e)	Currently Effective Rates [2] (f)	Proposed Tariff Rates (g)	Increase/ (Decrease) (h)	Total Revenue			
									Present (i)	Calculated (j)	Change (k)	Percent Change (l)
33	Water Pumping Gas Service	SG-WP	14	\$ 250.00	754,043	\$ 0.31125	\$ 0.31946	\$ 0.00821	\$ 3,500	\$ 3,500		
34	All Usage								234,696	240,887		
35	Total								<u>\$ 238,196</u>	<u>\$ 244,387</u>	\$ 6,191	2.6%
36	Small Electric Generation Gas Service	SG-EG	0	\$ 0.00	0	\$ 0.25745	\$ 0.26566	\$ 0.00821	\$ 0	\$ 0		
37	All Usage								0	0		
38	Total								<u>\$ 0</u>	<u>\$ 0</u>	\$ 0	0.0%
39	Gas Service for Compression on Customer's Premises	SG-CNG	70	\$ 25.80					\$ 1,806	\$ 1,806		
40	Residential Basic Service Charge		14	\$ 10.80					151	151		
41	All Usage				1,388,731	\$ 0.29508	\$ 0.30329	\$ 0.00821	409,787	421,188		
42	Total								<u>\$ 411,744</u>	<u>\$ 423,145</u>	\$ 11,401	2.8%
43	Street and Outdoor Lighting Gas Service	SG-L	8,414		447,880	\$ 0.51328	\$ 0.52149	\$ 0.00821	\$ 229,888	\$ 233,565		
44	All Usage								<u>\$ 229,888</u>	<u>\$ 233,565</u>	\$ 3,677	1.6%
45	Total								<u>\$ 279,771,672</u>	<u>\$ 282,948,662</u>	\$ 3,176,990	1.1%
46	Total Sales				<u>386,965,903</u>							

[1] Number of Bills and Sales for the twelve months ended December 2016.

[2] Rates approved in Advice Letter No. 502 effective January 1, 2017.

**SOUTHWEST GAS CORPORATION
NORTHERN NEVADA
PROPOSED ANNUALIZED CHANGE IN RATES AND REVENUE BY RATE SCHEDULE**

Line No.	Description (a)	Rate Schedule (b)	Annual Number of Bills [1] (c)	Basic Service Charge (d)	Annual Volumes (Therms) [1] (e)	Currently Effective Rates [2] (f)	Proposed Tariff Rates (g)	Increase/ (Decrease) (h)	Total Revenue			Percent Change (i)
									Present (i)	Proposed (j)	Change (k)	
1	Single-Family Residential Gas Service	NG-RS	843,439	\$ 10.80					\$ 9,109,141	\$ 9,109,141		1
2	All Usage				49,223,944	\$ 0.84337	\$ 0.98184	\$ 0.13847	41,513,998	48,330,037		2
3	Total								\$ 50,623,139	\$ 57,439,178	\$ 6,816,040	13.5%
4	Multi-Family Residential Gas Service	NG-RM	185,206	\$ 10.80					\$ 2,000,225	\$ 2,000,225		4
5	All Usage				6,168,846	\$ 0.90065	\$ 1.03912	\$ 0.13847	5,555,971	6,410,171		5
6	Total								\$ 7,556,196	\$ 8,410,396	\$ 854,200	11.3%
7	Air Conditioning Residential Gas Service	NG-RAC	36	\$ 10.80					\$ 389	\$ 389		7
8	All Usage				2,825	\$ 0.73124	\$ 0.86971	\$ 0.13847	2,066	2,457		8
9	Total								\$ 2,455	\$ 2,846	\$ 391	15.9%
10	General Gas Service - 1	NG-G1	91,352	\$ 28.80					\$ 2,630,938	\$ 2,630,938		10
11	All Usage				10,723,281	\$ 0.74796	\$ 0.88643	\$ 0.13847	8,020,595	9,505,438		11
12	Total								\$ 10,651,523	\$ 12,136,376	\$ 1,484,853	13.9%
13	General Gas Service - 2	NG-G2	8,908	\$ 160.00					\$ 1,425,280	\$ 1,425,280		13
14	All Usage				11,860,565	\$ 0.58897	\$ 0.72744	\$ 0.13847	6,985,517	8,627,849		14
15	Total								\$ 8,410,797	\$ 10,053,129	\$ 1,642,332	19.5%
16	General Gas Service - 3	NG-G3	817	\$ 350.00					\$ 285,950	\$ 285,950		16
17	All Usage				5,489,741	\$ 0.50695	\$ 0.64542	\$ 0.13847	2,783,024	3,543,189		17
18	Total								\$ 3,068,974	\$ 3,829,139	\$ 760,164	24.8%
19	General Gas Service - 4	NG-G4	215	\$ 1,000.00					\$ 215,000	\$ 215,000		19
20	All Usage				5,675,545	\$ 0.47369	\$ 0.61216	\$ 0.13847	2,688,449	3,474,342		20
21	Demand				27,369,564	0.02400	0.02400	0.00000	656,870	656,870		21
22	Total								\$ 3,560,318	\$ 4,346,211	\$ 785,893	22.1%
23	Air Conditioning Gas Service	NG-AC	0	\$ 0.00					\$ 0	\$ 0		23
24	Basic Service Charge		12	\$ 28.80					346	346		24
25	All Usage				3,832	\$ 0.54029	\$ 0.67876	\$ 0.13847	2,070	2,601		25
26	Total								\$ 2,416	\$ 2,947	\$ 531	22.0%

[1] Number of Bills and Sales for the twelve months ended December 2016.

[2] Rates approved in Advice Letter No. 502 effective January 1, 2017.

**SOUTHWEST GAS CORPORATION
NORTHERN NEVADA
PROPOSED ANNUALIZED CHANGE IN RATES AND REVENUE BY RATE SCHEDULE**

Line No.	Description (a)	Rate Schedule (b)	Annual Number of Bills [1] (c)	Basic Service Charge (d)	Annual Volumes (Therms) [1] (e)	Currently Effective Rates [2] (f)	Proposed Tariff Rates (g)	Increase/ (Decrease) (h)	Total Revenue			Percent Change (i)
									Present (i)	Proposed (j)	Change (k)	
27	Water Pumping Gas Service	NG-WP	24	\$ 36.00		\$ 0.59058	\$ 0.72905	\$ 0.13847	\$ 864	\$ 864	\$ -	
28	All Usage				4,039				2,385	2,945	\$ 559	17.2%
29	Total								\$ 3,249	\$ 3,809	\$ 559	17.2%
30	Small Electric Generation Gas Service								\$ 1,037	\$ 1,037	\$ -	
31	General Gas Service - 1 (NG-EG)	NG-EG	36	\$ 28.80		\$ 0.59241	\$ 0.73088	\$ 0.13847	1,920	1,920	\$ -	
32	General Gas Service - 2 (NG-EG)		12	\$ 160.00	73,934				43,799	54,037	\$ 10,238	21.9%
33	All Usage								\$ 46,756	\$ 56,994	\$ 10,238	21.9%
34	Total								\$ -	\$ -	\$ -	
34	Gas Service for Compression on Customer's Premises	NG-CNG	24	\$ 25.80		\$ 0.56632	\$ 0.70479	\$ 0.13847	619	619	\$ -	
35	Residential Basic Service Charge				315				178	222	\$ 44	5.5%
36	All Usage								\$ 798	\$ 841	\$ 44	5.5%
37	Total								\$ -	\$ -	\$ -	
38	Street and Outdoor Lighting Gas Service	NG-L	685			\$ 1.31459	\$ 1.45306	\$ 0.13847	\$ 29,087	\$ 32,150	\$ 3,064	10.5%
39	All Usage				22,126				\$ 29,087	\$ 32,150	\$ 3,064	10.5%
40	Total								\$ -	\$ -	\$ -	
41	Total Sales				<u>89,248,993</u>				\$ 83,955,707	\$ 96,314,015	\$ 12,358,309	14.7%

[1] Number of Bills and Sales for the twelve months ended December 2016.
[2] Rates approved in Advice Letter No. 502 effective January 1, 2017.



Quarterly Gas Cost Rate Adjustment—Southern Nevada

Effective April 1, 2017, Southwest Gas Corporation is adjusting rates to reflect changes in the quarterly Gas Cost rate for Southern Nevada customers. The rate is composed of the Base Tariff Energy Rate (BTER) and the Deferred Energy Account Adjustment (DEAA). This rate is updated quarterly to account for changes in the cost of gas the Company purchased on behalf of its customers, with no profit to the Company.

The transactions and recorded cost of natural gas which are the basis for the quarterly rate adjustment will be reviewed for reasonableness and prudence in the next Annual Rate Adjustment proceeding. The result of this quarterly rate adjustment is an increase in annualized revenue of \$3,176,990 or 1.1%.

The table on the back of this notice shows the change in an average monthly bill for each rate schedule. The change to individual customer bills will vary depending on the amount of gas consumed.

SW5748-SNV (04/2017)



Quarterly Gas Cost Rate Adjustment—Northern Nevada

Effective April 1, 2017, Southwest Gas Corporation is adjusting rates to reflect changes in the quarterly Gas Cost rate for Northern Nevada customers. The rate is composed of the Base Tariff Energy Rate (BTER) and the Deferred Energy Account Adjustment (DEAA). This rate is updated quarterly to account for changes in the cost of gas the Company purchased on behalf of its customers, with no profit to the Company.

The transactions and recorded cost of natural gas which are the basis for the quarterly rate adjustment will be reviewed for reasonableness and prudence in the next Annual Rate Adjustment proceeding. The result of this quarterly rate adjustment is an increase in annualized revenue of \$12,358,309 or 14.7%.

The table on the back of this notice shows the change in an average monthly bill for each rate schedule. The change to individual customer bills will vary depending on the amount of gas consumed.

SW5747-NNV (04/2017)

