



BRIAN SANDOVAL
Governor

STATE OF NEVADA
PUBLIC UTILITIES COMMISSION

JOSEPH C. REYNOLDS
Chairman

ANN C. PONGRACZ
Commissioner

BRUCE H. BRESLOW
Commissioner

STEPHANIE MULLEN
Executive Director

December 27, 2017

Southwest Gas Corporation
P.O. Box 98510
Las Vegas, NV 89193

RE: Docket No.: 17-11035
Southwest Gas Corporation filed Notice under Advice Letter No. 508 to adjust Northern and Southern Nevada Base Tariff Energy Rates and Deferred Energy Account Adjustment Rates effective January 1, 2018.

To Whom It May Concern:

The Regulatory Operations Staff has reviewed and processed the tariff sheets as filed in the above referenced docket. Enclosed are copies of the tariff sheets which have been accepted for filing by the Public Utilities Commission of Nevada, effective January 1, 2018.

Sincerely,

A handwritten signature in cursive script that reads "Sydney Santos".

Sydney Santos
Administrative Assistant III

Enclosure(s)

cc: PUC Master File

STATEMENT OF RATES
EFFECTIVE RATES APPLICABLE TO SOUTHERN NEVADA SCHEDULES ^{1/2/}

Schedule Number	Description	Delivery Charge ^{3/}	Gas Cost			Currently Effective Tariff Rate
			Base Tariff Energy Rate ^{4/}	Deferred Energy Account Adjustment	Renewable Energy Program Rate	
SG-RS	<u>Single-Family Residential Gas Service</u>					
	Basic Service Charge per Month	\$ 10.80				\$ 10.80
	Commodity Charge per Therm:					
	All Usage	\$.32220	\$.36235	(\$.05214)	(\$.00255)	\$.62986
SG-RM	<u>Multi-Family Residential Gas Service</u>					
	Basic Service Charge per Month	\$ 9.00				\$ 9.00
	Commodity Charge per Therm:					
	All Usage	\$.29537	\$.36235	(\$.05214)	(\$.00255)	\$.60303
SG-RAC	<u>Air Conditioning Residential Gas Service</u>					
	Basic Service Charge per Month	\$ 10.80				\$ 10.80
	Commodity Charge per Therm:					
	All Usage	\$.12938	\$.36235	(\$.05214)	(\$.00255)	\$.43704
SG-G1	<u>General Gas Service - 1</u>					
	Basic Service Charge per Month	\$ 25.80				\$ 25.80
	Commodity Charge per Therm:					
	All Usage	\$.34009	\$.36235	(\$.05214)	(\$.00255)	\$.64775
SG-G2	<u>General Gas Service - 2</u>					
	Basic Service Charge per Month	\$ 160.00				\$ 160.00
	Commodity Charge per Therm:					
	All Usage	\$.12223	\$.36235	(\$.05214)	(\$.00255)	\$.42989
SG-G3	<u>General Gas Service - 3</u>					
	Basic Service Charge per Month	\$ 350.00				\$ 350.00
	Commodity Charge per Therm:					
	All Usage	\$.10555	\$.36235	(\$.05214)	(\$.00255)	\$.41321
SG-G4	<u>General Gas Service - 4</u>					
	Basic Service Charge per Month	\$1,000.00				\$1,000.00
	Commodity Charge per Therm:					
	All Usage	\$.03504	\$.36235	(\$.05214)	(\$.00255)	\$.34270
	Demand Charge ^{5/}	\$.03950				\$.03950
SG-AC	<u>Air Conditioning Gas Service</u>					
	Basic Service Charge per Month	\$ 25.80				\$ 25.80
	Commodity Charge per Therm:					
	All Usage	\$.07443	\$.36235	(\$.05214)	(\$.00255)	\$.38209

Issued:
December 14, 2017

Effective:
January 1, 2018

Advice Letter No.:

Issued by
Justin Lee Brown
Vice President

Filing Accepted
Effective

JAN - 1 2018

Public Utilities Commission
of Nevada

STATEMENT OF RATES
EFFECTIVE RATES APPLICABLE TO SOUTHERN NEVADA SCHEDULES ^{1/2/}

Schedule Number	Description	Delivery Charge ^{3/}	Gas Cost			Currently Effective Tariff Rate
			Base Tariff Energy Rate ^{4/}	Deferred Energy Account Adjustment	Renewable Energy Program Rate	
SG-WP	<u>Water Pumping Gas Service</u>					
	Basic Service Charge per Month	\$ 250.00				\$ 250.00
	Commodity Charge per Therm:					
	All Usage	\$.12823	\$.36235	(\$.05214)	(\$.00255)	\$.43589
SG-EG	<u>Small Electric Generation Gas Service</u>					
	Basic Service Charge per Month	Otherwise Applicable Rate Schedule				
	Commodity Charge per Therm:					
	All Usage	\$.07443	\$.36235	(\$.05214)	(\$.00255)	\$.38209
SG-CNG	<u>Gas Service for Compression on Customer's Premises ^{6/}</u>					
	Basic Service Charge per Month	\$ 25.80				\$ 25.80
	Commodity Charge per Therm:					
	All Usage	\$.11206	\$.36235	(\$.05214)	(\$.00255)	\$.41972
SG-L	<u>Street and Outdoor Lighting Gas Service</u>					
	Commodity Charge per Therm:					
	All Usage	\$.33026	\$.36235	(\$.05214)	(\$.00255)	\$.63792
SG-OS	<u>Optional Gas Service</u>					
		As specified on Sheet Nos. 48 through 51.				
SG-AS	<u>Alternative Sales Service</u>					
		As specified on Sheet Nos. 52 through 53.				

^{1/} The charges shown above are subject to adjustments for taxes and assessments.

^{2/} Customers taking transportation service will pay the Basic Service Charge, the Delivery Charge per therm, and Demand Charge, if applicable, of the Currently Effective Tariff Rate for each meter included in the transportation service agreement, plus an amount for distribution system shrinkage for all volumes of gas not delivered through a direct connection to one of the Company's upstream interstate pipelines. The high pressure shrinkage rate is \$.00000 per therm, and the low pressure shrinkage rate is \$.00000 per therm. Additionally customers will pay the Southwest Gas Transmission Company (SGTC) Annual Charge Adjustment (ACA) rate of \$.00013 per therm for all scheduled volumes that flow through the SGTC pipeline. The ACA Charge will also apply to applicable traded and imbalance volumes. Also, customers will pay the Conservation and Energy Efficiency rate of \$0.00061 per therm. In addition, the customer will also pay a Transportation Service Charge of \$500.00 per month per individually qualifying premise. For purposes of calculating Payment for Excess Imbalances, the Imbalance Commodity Charge is \$0.28053 per therm and the Imbalance Reservation Charge is \$0.07048 per therm. For customers converting from sales service, an additional amount equal to the currently effective Deferred Energy Accounting Adjustment will be assessed for a period of twelve (12) months.

Issued:
December 14, 2017

Effective:
January 1, 2018

Advice Letter No.:

Issued by
Justin Lee Brown
Vice President

Filing Accepted
Effective

JAN - 1 2018

Public Utilities Commission
of Nevada

STATEMENT OF RATES
EFFECTIVE RATES APPLICABLE TO SOUTHERN NEVADA SCHEDULES ^{1/2/}
(Continued)

^{3/} Includes the following:

Component/Schedule	SG-RS	SG-RM	SG-RAC	SG-G1	SG-G2	SG-G3
Margin	.30851	.29260	.11266	.33889	.10650	.08255
Accumulated Deferred Interest Rate Adjustment	.00248	.00248	.00248	.00248	.00248	.00248
General Revenues Adjustment	(.00303)	(.01395)	.00000	(.01552)	(.00099)	.00628
Gas Infrastructure Replacement Rate	.01507	.01507	.01507	.01507	.01507	.01507
Conservation and Energy Efficiency	(.00083)	(.00083)	(.00083)	(.00083)	(.00083)	(.00083)
Total	.32220	.29537	.12938	.34009	.12223	.10555

Component/Schedule	SG-G4	SG-AC	SG-WP	SG-EG	SG-CNG	SG-L
Margin	.01832	.05771	.11151	.05771	.09534	.31354
Accumulated Deferred Interest Rate Adjustment	.00248	.00248	.00248	.00248	.00248	.00248
General Revenues Adjustment	.00000	.00000	.00000	.00000	.00000	.00000
Gas Infrastructure Replacement Rate	.01507	.01507	.01507	.01507	.01507	.01507
Conservation and Energy Efficiency	(.00083)	(.00083)	(.00083)	(.00083)	(.00083)	(.00083)
Total	.03504	.07443	.12823	.07443	.11206	.33026

- ^{4/} For all rate schedules, the Base Tariff Energy Rate (BTER) includes \$(0.00234) per therm for the Unrecovered Gas Cost Expense Base Rate.
- ^{5/} The total monthly demand charge for General Gas Service - 4 is equal to the unit rate shown multiplied by the customer's billing determinant.
- ^{6/} The charges for Schedule No. SG-CNG are subject to adjustments for applicable state and federal taxes on fuel used in motor vehicles.

Issued:

December 14, 2017

Effective:

January 1, 2018

Advice Letter No.:

Issued by
Justin Lee Brown
Vice President

Filing Accepted
Effective

JAN - 1 2018

Public Utilities Commission
of Nevada

STATEMENT OF RATES
EFFECTIVE RATES APPLICABLE TO NORTHERN NEVADA SCHEDULES ^{1/2}

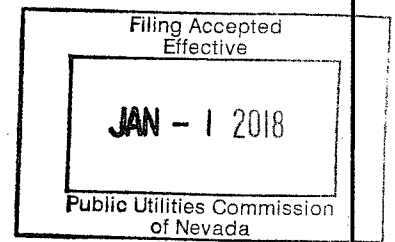
Schedule Number	Description	Delivery Charge ^{3/}	Gas Cost			Renewable Energy Program Rate	Currently Effective Tariff Rate
			Base Tariff Energy Rate ^{4/}	Deferred Energy Account Adjustment			
NG-RS	Single-Family Residential Gas Service						
	Basic Service Charge per Month	\$ 10.80					\$ 10.80
	Commodity Charge per Therm:						
	All Usage	\$.30675	\$.62297	\$.02500	(\$.00091)		\$.95381 R
NG-RM	Multi-Family Residential Gas Service						
	Basic Service Charge per Month	\$ 10.80					\$ 10.80
	Commodity Charge per Therm:						
	All Usage	\$.33810	\$.62297	\$.02500	(\$.00091)		\$.98516 R
NG-RAC	Air Conditioning Residential Gas Service						
	Basic Service Charge per Month	\$ 10.80					\$ 10.80
	Commodity Charge per Therm:						
	All Usage	\$.26820	\$.62297	\$.02500	(\$.00091)		\$.91526 R
NG-G1	General Gas Service - 1						
	Basic Service Charge per Month	\$ 28.80					\$ 28.80
	Commodity Charge per Therm:						
	All Usage	\$.22958	\$.62297	\$.02500	(\$.00091)		\$.87664 R
NG-G2	General Gas Service - 2						
	Basic Service Charge per Month	\$ 160.00					\$ 160.00
	Commodity Charge per Therm:						
	All Usage	\$.08477	\$.62297	\$.02500	(\$.00091)		\$.73183 R
NG-G3	General Gas Service - 3						
	Basic Service Charge per Month	\$ 350.00					\$ 350.00
	Commodity Charge per Therm:						
	All Usage	\$.02660	\$.62297	\$.02500	(\$.00091)		\$.67366 R
NG-G4	General Gas Service - 4						
	Basic Service Charge per Month	\$1,000.00					\$1,000.00
	Commodity Charge per Therm:						
	All Usage	\$.01065	\$.62297	\$.02500	(\$.00091)		\$.65771 R
	Demand Charge ^{5/}	\$.02400					\$.02400
NG-AC	Air Conditioning Gas Service						
	Basic Service Charge per Month	\$ 28.80					\$ 28.80
	Commodity Charge per Therm:						
	All Usage	\$.07725	\$.62297	\$.02500	(\$.00091)		\$.72431 R

Issued:
December 14, 2017

Effective:
January 1, 2018

Advice Letter No.:

Issued by
Justin Lee Brown
Vice President



STATEMENT OF RATES
EFFECTIVE RATES APPLICABLE TO NORTHERN NEVADA SCHEDULES ^{1/2/}

Schedule Number	Description	Delivery Charge ^{3/}	Gas Cost		Renewable Energy Program Rate	Currently Effective Tariff Rate		
			Base Tariff Energy Rate ^{4/}	Deferred Energy Account Adjustment				
NG-WP	<u>Water Pumping Gas Service</u>							
	Basic Service Charge per Month	\$ 36.00				\$ 36.00		
	Commodity Charge per Therm:							
	All Usage	\$.12754	\$.62297	\$.02500	(\$.00091)	\$.77460		R
NG-EG	<u>Small Electric Generation Gas Service</u>							
	Basic Service Charge per Month		Otherwise Applicable Rate Schedule					
	Commodity Charge per Therm:							
	All Usage	\$.12937	\$.62297	\$.02500	(\$.00091)	\$.77643		R
NG-CNG	<u>Gas Service for Compression on Customer's Premises ^{6/}</u>							
	Basic Service Charge	\$ 25.80				\$ 25.80		
	Commodity Charge per Therm:							
	All Usage	\$.10328	\$.62297	\$.02500	(\$.00091)	\$.75034		R
NG-L	<u>Street and Outdoor Lighting Gas Service</u>							
	Commodity Charge per Therm:							
	All Usage	\$.85155	\$.62297	\$.02500	(\$.00091)	\$ 1.49861		R
NG-OS	<u>Optional Gas Service</u>							
			As specified on Sheet Nos. 48 through 51.					
NG-AS	<u>Alternative Sales Service</u>							
			As specified on Sheet Nos. 52 through 53.					

^{1/} The charges shown above are subject to adjustments for taxes and assessments.

^{2/} Customers taking transportation service will pay the Basic Service Charge, the Delivery Charge per therm, and Demand Charge, if applicable, of the Currently Effective Tariff Rate for each meter included in the transportation service agreement, plus an amount of \$0.00024 per therm for distribution system shrinkage as defined in Rule No. 1 of this Nevada Gas Tariff for all volumes of gas not delivered through a direct connection to one of the Company's upstream interstate pipelines, the Conservation and Energy Efficiency rate of \$(0.00373) per therm, and a Transportation Service Charge of \$500.00 per month per individually qualifying premise. For purposes of calculating Payment for Excess Imbalances, the Imbalance Commodity Charge is \$0.28213 per therm and the Imbalance Reservation Charge is \$0.33552 per therm. For customers converting from sales service, an additional amount equal to the currently effective Deferred Energy Accounting Adjustment will be assessed for a period of twelve (12) months.

<p>Issued: December 14, 2017</p> <p>Effective: January 1, 2018</p> <p>Advice Letter No.:</p>	<p>Issued by Justin Lee Brown Vice President</p>	<div style="border: 1px solid black; padding: 5px;"> <p>Filing Accepted Effective</p> <div style="border: 1px solid black; padding: 5px; margin: 5px 0;"> <p>JAN - 1 2018</p> </div> <p>Public Utilities Commission of Nevada</p> </div>
---	--	--

STATEMENT OF RATES
EFFECTIVE RATES APPLICABLE TO NORTHERN NEVADA SCHEDULES ^{1/2/}
(Continued)

3/ Includes the following:

Component/Schedule	NG-RS	NG-RM	NG-RAC	NG-G1	NG-G2	NG-G3
Margin	.33097	.35600	.26981	.27810	.10086	.03582
General Revenues Adjustment	(.02261)	(.01629)	.00000	(.04691)	(.01448)	(.00761)
Gas Infrastructure Replacement Rate	.00367	.00367	.00367	.00367	.00367	.00367
Conservation and Energy Efficiency	(.00528)	(.00528)	(.00528)	(.00528)	(.00528)	(.00528)
Total	.30675	.33810	.26820	.22958	.08477	.02660

Component/Schedule	NG-G4	NG-AC	NG-WP	NG-EG	NG-CNG	NG-L
Margin	.01226	.07886	.12915	.13098	.10489	.85316
General Revenues Adjustment	.00000	.00000	.00000	.00000	.00000	.00000
Gas Infrastructure Replacement Rate	.00367	.00367	.00367	.00367	.00367	.00367
Conservation and Energy Efficiency	(.00528)	(.00528)	(.00528)	(.00528)	(.00528)	(.00528)
Total	.01065	.07725	.12754	.12937	.10328	.85155

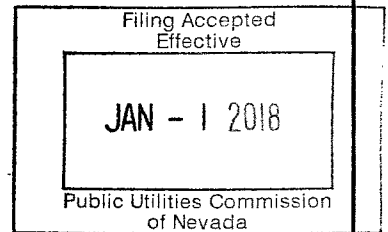
- 4/ For all rate schedules, the Base Tariff Energy Rate (BTER) includes \$(0.00057) per therm for the Unrecovered Gas Cost Expense Base Rate.
- 5/ The total monthly demand charge for General Gas Service - 4 is equal to the unit rate shown multiplied by the customer's billing determinant.
- 6/ The charges for Schedule No. NG-CNG are subject to adjustments for applicable state and federal taxes on fuel used in motor vehicles.

Issued:
December 14, 2017

Effective:
January 1, 2018

Advice Letter No.:

Issued by
Justin Lee Brown
Vice President





BRIAN SANDOVAL
Governor

STATE OF NEVADA
PUBLIC UTILITIES COMMISSION

JOSEPH C. REYNOLDS
Chairman

ANN C. PONGRACZ
Commissioner

BRUCE H. BRESLOW
Commissioner

STEPHANIE MULLEN
Executive Director

December 14, 2017

Southwest Gas Corporation
P.O. Box 98510
Las Vegas, NV 89193-8510

RE: Docket No.: 17-11035
Southwest Gas Corporation filed Notice under Advice Letter No. 508 to adjust Northern and Southern Nevada Base Tariff Energy Rates and Deferred Energy Account Adjustment Rates effective January 1, 2018.

To Whom It May Concern:

The Regulatory Operations Staff has reviewed and processed the tariff sheets as filed in the above referenced docket. Enclosed are copies of the tariff sheets which have been accepted for filing by the Public Utilities Commission of Nevada, effective January 1, 2018.

Sincerely,

A handwritten signature in cursive script that reads "Sydney Santos".

Sydney Santos
Administrative Assistant III

Enclosure(s)

cc: PUC Master File

SOUTHWEST GAS CORPORATION
P.O. Box 98510
Las Vegas, Nevada 89193-8510
Nevada Gas Tariff No. 7

Canceling 44th Revised P.U.C.N. Sheet No. 10
43rd Revised P.U.C.N. Sheet No. 10

STATEMENT OF RATES
EFFECTIVE RATES APPLICABLE TO SOUTHERN NEVADA SCHEDULES ^{1/2/}

Schedule Number	Description	Delivery Charge ^{3/}	Gas Cost		Renewable Energy Program Rate	Currently Effective Tariff Rate
			Base Tariff Energy Rate ^{4/}	Deferred Energy Account Adjustment		
<u>SG-RS</u>	<u>Single-Family Residential Gas Service</u>					
	Basic Service Charge per Month	\$ 10.80				\$ 10.80
	Commodity Charge per Therm:					
	All Usage	\$.31430	\$.36235	(\$.05214)	(\$.00255)	\$.62196
<u>SG-RM</u>	<u>Multi-Family Residential Gas Service</u>					
	Basic Service Charge per Month	\$ 9.00				\$ 9.00
	Commodity Charge per Therm:					
	All Usage	\$.28747	\$.36235	(\$.05214)	(\$.00255)	\$.59513
<u>SG-RAC</u>	<u>Air Conditioning Residential Gas Service</u>					
	Basic Service Charge per Month	\$ 10.80				\$ 10.80
	Commodity Charge per Therm:					
	All Usage	\$.12148	\$.36235	(\$.05214)	(\$.00255)	\$.42914
<u>SG-G1</u>	<u>General Gas Service - 1</u>					
	Basic Service Charge per Month	\$ 25.80				\$ 25.80
	Commodity Charge per Therm:					
	All Usage	\$.33219	\$.36235	(\$.05214)	(\$.00255)	\$.63985
<u>SG-G2</u>	<u>General Gas Service - 2</u>					
	Basic Service Charge per Month	\$ 160.00				\$ 160.00
	Commodity Charge per Therm:					
	All Usage	\$.11433	\$.36235	(\$.05214)	(\$.00255)	\$.42199
<u>SG-G3</u>	<u>General Gas Service - 3</u>					
	Basic Service Charge per Month	\$ 350.00				\$ 350.00
	Commodity Charge per Therm:					
	All Usage	\$.09765	\$.36235	(\$.05214)	(\$.00255)	\$.40531
<u>SG-G4</u>	<u>General Gas Service - 4</u>					
	Basic Service Charge per Month	\$1,000.00				\$1,000.00
	Commodity Charge per Therm:					
	All Usage	\$.02714	\$.36235	(\$.05214)	(\$.00255)	\$.33480
	Demand Charge ^{5/}	\$.03950				\$.03950
<u>SG-AC</u>	<u>Air Conditioning Gas Service</u>					
	Basic Service Charge per Month	\$ 25.80				\$ 25.80
	Commodity Charge per Therm:					
	All Usage	\$.06653	\$.36235	(\$.05214)	(\$.00255)	\$.37419

Issued:
November 30, 2017

Effective:
January 1, 2018

Advice Letter No.:
508

Issued by
Justin Lee Brown
Vice President

Filing Accepted
Effective

JAN 1 2018

Public Utilities Commission
of Nevada

STATEMENT OF RATES
EFFECTIVE RATES APPLICABLE TO SOUTHERN NEVADA SCHEDULES ^{1/2/}

Schedule Number	Description	Delivery Charge ^{3/}	Gas Cost			Currently Effective Tariff Rate
			Base Tariff Energy Rate ^{4/}	Deferred Energy Account Adjustment	Renewable Energy Program Rate	
SG-WP	Water Pumping Gas Service					
	Basic Service Charge per Month	\$ 250.00				\$ 250.00
	Commodity Charge per Therm:					
	All Usage	\$.12033	\$.36235	(\$.05214)	(\$.00255)	\$.42799
SG-EG	Small Electric Generation Gas Service					
	Basic Service Charge per Month	Otherwise Applicable Rate Schedule				
	Commodity Charge per Therm:					
	All Usage	\$.06653	\$.36235	(\$.05214)	(\$.00255)	\$.37419
SG-CNG	Gas Service for Compression on Customer's Premises ^{6/}					
	Basic Service Charge per Month	\$ 25.80				\$ 25.80
	Commodity Charge per Therm:					
	All Usage	\$.10416	\$.36235	(\$.05214)	(\$.00255)	\$.41182
SG-L	Street and Outdoor Lighting Gas Service					
	Commodity Charge per Therm:					
	All Usage	\$.32236	\$.36235	(\$.05214)	(\$.00255)	\$.63002
SG-OS	Optional Gas Service					
SG-AS	Alternative Sales Service					

As specified on Sheet Nos. 48 through 51.

As specified on Sheet Nos. 52 through 53.

^{1/} The charges shown above are subject to adjustments for taxes and assessments.

^{2/} Customers taking transportation service will pay the Basic Service Charge, the Delivery Charge per therm, and Demand Charge, if applicable, of the Currently Effective Tariff Rate for each meter included in the transportation service agreement, plus an amount for distribution system shrinkage for all volumes of gas not delivered through a direct connection to one of the Company's upstream interstate pipelines. The high pressure shrinkage rate is \$.00000 per therm, and the low pressure shrinkage rate is \$.00000 per therm. Additionally customers will pay the Southwest Gas Transmission Company (SGTC) Annual Charge Adjustment (ACA) rate of \$.00013 per therm for all scheduled volumes that flow through the SGTC pipeline. The ACA Charge will also apply to applicable traded and imbalance volumes. Also, customers will pay the Conservation and Energy Efficiency rate of \$.000061 per therm. In addition, the customer will also pay a Transportation Service Charge of \$500.00 per month per individually qualifying premise. For purposes of calculating Payment for Excess Imbalances, the Imbalance Commodity Charge is \$0.28053 per therm and the Imbalance Reservation Charge is \$0.07048 per therm. For customers converting from sales service, an additional amount equal to the currently effective Deferred Energy Accounting Adjustment will be assessed for a period of twelve (12) months.

<p>Issued: November 30, 2017</p> <p>Effective: January 1, 2018</p> <p>Advice Letter No.: 508</p>	<p>Issued by Justin Lee Brown Vice President</p>	<div style="border: 1px solid black; padding: 5px;"> <p>Filing Accepted Effective</p> <div style="border: 1px solid black; padding: 5px; margin: 5px 0;"> <p>JAN 1 2018</p> </div> <p>Public Utilities Commission of Nevada</p> </div>
---	--	--

SOUTHWEST GAS CORPORATION
P.O. Box 98510
Las Vegas, Nevada 89193-8510
Nevada Gas Tariff No. 7

Canceling 43rd Revised P.U.C.N. Sheet No. 12
42nd Revised P.U.C.N. Sheet No. 12

STATEMENT OF RATES
EFFECTIVE RATES APPLICABLE TO NORTHERN NEVADA SCHEDULES ^{1/2}

Schedule Number	Description	Delivery Charge ^{3/}	Gas Cost			Renewable Energy Program Rate	Currently Effective Tariff Rate
			Base Tariff Energy Rate ^{4/}	Deferred Energy Account Adjustment			
NG-RS	Single-Family Residential Gas Service						
	Basic Service Charge per Month	\$ 10.80					\$ 10.80
	Commodity Charge per Therm:						
	All Usage	\$.30868	\$.62297	\$.02500	(\$.00091)		\$.95574
NG-RM	Multi-Family Residential Gas Service						
	Basic Service Charge per Month	\$ 10.80					\$ 10.80
	Commodity Charge per Therm:						
	All Usage	\$.34003	\$.62297	\$.02500	(\$.00091)		\$.98709
NG-RAC	Air Conditioning Residential Gas Service						
	Basic Service Charge per Month	\$ 10.80					\$ 10.80
	Commodity Charge per Therm:						
	All Usage	\$.27013	\$.62297	\$.02500	(\$.00091)		\$.91719
NG-G1	General Gas Service - 1						
	Basic Service Charge per Month	\$ 28.80					\$ 28.80
	Commodity Charge per Therm:						
	All Usage	\$.23151	\$.62297	\$.02500	(\$.00091)		\$.87857
NG-G2	General Gas Service - 2						
	Basic Service Charge per Month	\$ 160.00					\$ 160.00
	Commodity Charge per Therm:						
	All Usage	\$.08670	\$.62297	\$.02500	(\$.00091)		\$.73376
NG-G3	General Gas Service - 3						
	Basic Service Charge per Month	\$ 350.00					\$ 350.00
	Commodity Charge per Therm:						
	All Usage	\$.02853	\$.62297	\$.02500	(\$.00091)		\$.67559
NG-G4	General Gas Service - 4						
	Basic Service Charge per Month	\$1,000.00					\$1,000.00
	Commodity Charge per Therm:						
	All Usage	\$.01258	\$.62297	\$.02500	(\$.00091)		\$.65964
	Demand Charge ^{5/}	\$.02400					\$.02400
NG-AC	Air Conditioning Gas Service						
	Basic Service Charge per Month	\$ 28.80					\$ 28.80
	Commodity Charge per Therm:						
	All Usage	\$.07918	\$.62297	\$.02500	(\$.00091)		\$.72624

<p>Issued: November 30, 2017</p> <p>Effective: January 1, 2018</p> <p>Advice Letter No.: 508</p>	<p>Issued by Justin Lee Brown Vice President</p>	<div style="border: 1px solid black; padding: 5px;"> <p>Filing Accepted Effective</p> <div style="border: 1px solid black; padding: 5px; margin: 5px 0;"> <p>JAN 1 2018</p> </div> <p>Public Utilities Commission of Nevada</p> </div>
---	--	--

STATEMENT OF RATES
EFFECTIVE RATES APPLICABLE TO NORTHERN NEVADA SCHEDULES ^{1/2/}

Schedule Number	Description	Delivery Charge ^{3/}	Gas Cost		Renewable Energy Program Rate	Currently Effective Tariff Rate
			Base Tariff Energy Rate ^{4/}	Deferred Energy Account Adjustment		
NG-WP	<u>Water Pumping Gas Service</u>					
	Basic Service Charge per Month	\$ 36.00				\$ 36.00
	Commodity Charge per Therm:					
	All Usage	\$.12947	\$.62297	\$.02500	(\$.00091)	\$.77653
NG-EG	<u>Small Electric Generation Gas Service</u>					
	Basic Service Charge per Month	Otherwise Applicable Rate Schedule				
	Commodity Charge per Therm:					
	All Usage	\$.13130	\$.62297	\$.02500	(\$.00091)	\$.77836
NG-CNG	<u>Gas Service for Compression on Customer's Premises ^{6/}</u>					
	Basic Service Charge	\$ 25.80				\$ 25.80
	Commodity Charge per Therm:					
	All Usage	\$.10521	\$.62297	\$.02500	(\$.00091)	\$.75227
NG-L	<u>Street and Outdoor Lighting Gas Service</u>					
	Commodity Charge per Therm:					
	All Usage	\$.85348	\$.62297	\$.02500	(\$.00091)	\$ 1.50054
NG-OS	<u>Optional Gas Service</u>	As specified on Sheet Nos. 48 through 51.				
NG-AS	<u>Alternative Sales Service</u>	As specified on Sheet Nos. 52 through 53.				

^{1/} The charges shown above are subject to adjustments for taxes and assessments.

^{2/} Customers taking transportation service will pay the Basic Service Charge, the Delivery Charge per therm, and Demand Charge, if applicable, of the Currently Effective Tariff Rate for each meter included in the transportation service agreement, plus an amount of \$0.00024 per therm for distribution system shrinkage as defined in Rule No. 1 of this Nevada Gas Tariff for all volumes of gas not delivered through a direct connection to one of the Company's upstream interstate pipelines, the Conservation and Energy Efficiency rate of \$(0.00373) per therm, and a Transportation Service Charge of \$500.00 per month per individually qualifying premise. For purposes of calculating Payment for Excess Imbalances, the Imbalance Commodity Charge is \$0.28213 per therm and the Imbalance Reservation Charge is \$0.33552 per therm. For customers converting from sales service, an additional amount equal to the currently effective Deferred Energy Accounting Adjustment will be assessed for a period of twelve (12) months.

<p>Issued: November 30, 2017</p> <p>Effective: January 1, 2018</p> <p>Advice Letter No.: 508</p>	<p>Issued by Justin Lee Brown Vice President</p>	<div style="border: 1px solid black; padding: 5px;"> <p>Filing Accepted Effective</p> <div style="border: 1px solid black; padding: 5px; margin: 5px 0;"> <p>JAN 1 2018</p> </div> <p>Public Utilities Commission of Nevada</p> </div>
---	--	--



SOUTHWEST GAS CORPORATION

November 30, 2017

Ms. Trisha Osborne
Assistant Commission Secretary
Public Utilities Commission of Nevada
1150 East William Street
Carson City, NV 89701-3109

Dear Ms. Osborne:

Southwest Gas Corporation herewith submits for filing Advice Letter No. 508 to reflect the change in the quarterly Gas Cost rate, effective January 1, 2018. The workpapers to support the calculations contained in this filing are being provided under separate cover to Regulatory Operations Staff and the Bureau of Consumer Protection.

Communications regarding this Advice Letter should be directed to:

Ed Giesecking
Director/Regulation & Energy Efficiency
Southwest Gas Corporation
P.O. Box 98510
Las Vegas, NV 89193-8510
Telephone: 702-364-3271
E-mail: ed.giesecking@swgas.com

Amy L. Timperley
Regulatory Manager/Nevada
Southwest Gas Corporation
P.O. Box 98510
Las Vegas, NV 89193-8510
Telephone: 702-876-7266
E-mail: amy.timperley@swgas.com

Respectfully submitted,

Amy L. Timperley
Regulatory Manager/Nevada

Enclosures

c: Ernest Figueroa, BCP
Anne-Marie Cuneo, PUCN



SOUTHWEST GAS CORPORATION

Advice Letter No. 508

November 30, 2017

PUBLIC UTILITIES COMMISSION OF NEVADA

Southwest Gas Corporation tenders herewith for filing the following tariff sheets applicable to its Nevada Gas Tariff No. 7:

Proposed PUCN Sheet No.

44th Revised Sheet No. 10
44th Revised Sheet No. 11
43rd Revised Sheet No. 12
43rd Revised Sheet No. 13

Supersedes PUCN Sheet No.

43rd Revised Sheet No. 10
43rd Revised Sheet No. 11
42nd Revised Sheet No. 12
42nd Revised Sheet No. 13

The purpose of this filing is to adjust rates to reflect the change in the quarterly Gas Cost rate, effective January 1, 2018. The quarterly Gas Cost rate includes two components, the Base Tariff Energy Rate (BTER) and the Deferred Energy Account Adjustment (DEAA).

In Southern Nevada, the BTER will decrease by \$0.00049 per therm, and the DEAA will increase by \$0.02500 per therm. As such, the overall change in the Southern Nevada Gas Cost rate will be an increase of \$0.02451 per therm. This results in an increase in annualized revenue of \$9,674,335. The calculation of Southern Nevada's annualized revenue change is attached in Schedule 1.

In Northern Nevada, the BTER will increase by \$0.00099 per therm. The DEAA will increase by \$0.02500 per therm. As such, the overall change in the Northern Nevada Gas Cost rate will be an increase of \$0.02599 per therm. This results in an increase in annualized revenue of \$2,513,122. The calculation of Northern Nevada's annualized revenue change is attached in Schedule 2.

Customers are being notified of the rate changes by means of a bill insert included with each bill beginning approximately December 1, 2017. Copies of the bill inserts are attached.

This filing is made in accordance with the Nevada Administrative Code, NAC Chapter 703, of the Commission's Rules of Practice and Procedure.

Respectfully submitted,
SOUTHWEST GAS CORPORATION

By


Justin Lee Brown

STATEMENT OF RATES
EFFECTIVE RATES APPLICABLE TO SOUTHERN NEVADA SCHEDULES ^{1/2/}

Schedule Number	Description	Delivery Charge ^{3/}	Gas Cost			Currently Effective Tariff Rate
			Base Tariff Energy Rate ^{4/}	Deferred Energy Account Adjustment	Renewable Energy Program Rate	
<u>SG-RS</u>	<u>Single-Family Residential Gas Service</u>					
	Basic Service Charge per Month	\$ 10.80				\$ 10.80
	Commodity Charge per Therm:					
	All Usage	\$.31430	\$.36235	(\$.05214)	(\$.00255)	\$.62196
<u>SG-RM</u>	<u>Multi-Family Residential Gas Service</u>					
	Basic Service Charge per Month	\$ 9.00				\$ 9.00
	Commodity Charge per Therm:					
	All Usage	\$.28747	\$.36235	(\$.05214)	(\$.00255)	\$.59513
<u>SG-RAC</u>	<u>Air Conditioning Residential Gas Service</u>					
	Basic Service Charge per Month	\$ 10.80				\$ 10.80
	Commodity Charge per Therm:					
	All Usage	\$.12148	\$.36235	(\$.05214)	(\$.00255)	\$.42914
<u>SG-G1</u>	<u>General Gas Service - 1</u>					
	Basic Service Charge per Month	\$ 25.80				\$ 25.80
	Commodity Charge per Therm:					
	All Usage	\$.33219	\$.36235	(\$.05214)	(\$.00255)	\$.63985
<u>SG-G2</u>	<u>General Gas Service - 2</u>					
	Basic Service Charge per Month	\$ 160.00				\$ 160.00
	Commodity Charge per Therm:					
	All Usage	\$.11433	\$.36235	(\$.05214)	(\$.00255)	\$.42199
<u>SG-G3</u>	<u>General Gas Service - 3</u>					
	Basic Service Charge per Month	\$ 350.00				\$ 350.00
	Commodity Charge per Therm:					
	All Usage	\$.09765	\$.36235	(\$.05214)	(\$.00255)	\$.40531
<u>SG-G4</u>	<u>General Gas Service - 4</u>					
	Basic Service Charge per Month	\$1,000.00				\$1,000.00
	Commodity Charge per Therm:					
	All Usage	\$.02714	\$.36235	(\$.05214)	(\$.00255)	\$.33480
	Demand Charge ^{5/}	\$.03950				\$.03950
<u>SG-AC</u>	<u>Air Conditioning Gas Service</u>					
	Basic Service Charge per Month	\$ 25.80				\$ 25.80
	Commodity Charge per Therm:					
	All Usage	\$.06653	\$.36235	(\$.05214)	(\$.00255)	\$.37419

<p>Issued: November 30, 2017</p> <p>Effective: January 1, 2018</p> <p>Advice Letter No.: 508</p>	<p>Issued by Justin Lee Brown Vice President</p>	
---	--	--

STATEMENT OF RATES
EFFECTIVE RATES APPLICABLE TO SOUTHERN NEVADA SCHEDULES ^{1/2/}

Schedule Number	Description	Delivery Charge ^{3/}	Gas Cost			Currently Effective Tariff Rate
			Base Tariff Energy Rate ^{4/}	Deferred Energy Account Adjustment	Renewable Energy Program Rate	
SG-WP	<u>Water Pumping Gas Service</u>					
	Basic Service Charge per Month	\$ 250.00				\$ 250.00
	Commodity Charge per Therm:					
	All Usage	\$.12033	\$.36235	(\$.05214)	(\$.00255)	\$.42799
SG-EG	<u>Small Electric Generation Gas Service</u>					
	Basic Service Charge per Month	Otherwise Applicable Rate Schedule				
	Commodity Charge per Therm:					
	All Usage	\$.06653	\$.36235	(\$.05214)	(\$.00255)	\$.37419
SG-CNG	<u>Gas Service for Compression on Customer's Premises ^{6/}</u>					
	Basic Service Charge per Month	\$ 25.80				\$ 25.80
	Commodity Charge per Therm:					
	All Usage	\$.10416	\$.36235	(\$.05214)	(\$.00255)	\$.41182
SG-L	<u>Street and Outdoor Lighting Gas Service</u>					
	Commodity Charge per Therm:					
	All Usage	\$.32236	\$.36235	(\$.05214)	(\$.00255)	\$.63002
SG-OS	<u>Optional Gas Service</u>					
		As specified on Sheet Nos. 48 through 51.				
SG-AS	<u>Alternative Sales Service</u>					
		As specified on Sheet Nos. 52 through 53.				

^{1/} The charges shown above are subject to adjustments for taxes and assessments.

^{2/} Customers taking transportation service will pay the Basic Service Charge, the Delivery Charge per therm, and Demand Charge, if applicable, of the Currently Effective Tariff Rate for each meter included in the transportation service agreement, plus an amount for distribution system shrinkage for all volumes of gas not delivered through a direct connection to one of the Company's upstream interstate pipelines. The high pressure shrinkage rate is \$.00000 per therm, and the low pressure shrinkage rate is \$.00000 per therm. Additionally customers will pay the Southwest Gas Transmission Company (SGTC) Annual Charge Adjustment (ACA) rate of \$.00013 per therm for all scheduled volumes that flow through the SGTC pipeline. The ACA Charge will also apply to applicable traded and imbalance volumes. Also, customers will pay the Conservation and Energy Efficiency rate of \$0.00061 per therm. In addition, the customer will also pay a Transportation Service Charge of \$500.00 per month per individually qualifying premise. For purposes of calculating Payment for Excess Imbalances, the Imbalance Commodity Charge is \$0.28053 per therm and the Imbalance Reservation Charge is \$0.07048 per therm. For customers converting from sales service, an additional amount equal to the currently effective Deferred Energy Accounting Adjustment will be assessed for a period of twelve (12) months.

<p>Issued: November 30, 2017</p> <p>Effective: January 1, 2018</p> <p>Advice Letter No.: 508</p>	<p>Issued by Justin Lee Brown Vice President</p>
---	--

STATEMENT OF RATES
EFFECTIVE RATES APPLICABLE TO NORTHERN NEVADA SCHEDULES ^{1/2}

Schedule Number	Description	Delivery Charge ^{3/}	Gas Cost			Renewable Energy Program Rate	Currently Effective Tariff Rate
			Base Tariff Energy Rate ^{4/}	Deferred Energy Account Adjustment			
<u>NG-RS</u>	<u>Single-Family Residential Gas Service</u>						
	Basic Service Charge per Month	\$ 10.80					\$ 10.80
	Commodity Charge per Therm:						
	All Usage	\$.30868	\$.62297	\$.02500	(\$.00091)		\$.95574
<u>NG-RM</u>	<u>Multi-Family Residential Gas Service</u>						
	Basic Service Charge per Month	\$ 10.80					\$ 10.80
	Commodity Charge per Therm:						
	All Usage	\$.34003	\$.62297	\$.02500	(\$.00091)		\$.98709
<u>NG-RAC</u>	<u>Air Conditioning Residential Gas Service</u>						
	Basic Service Charge per Month	\$ 10.80					\$ 10.80
	Commodity Charge per Therm:						
	All Usage	\$.27013	\$.62297	\$.02500	(\$.00091)		\$.91719
<u>NG-G1</u>	<u>General Gas Service - 1</u>						
	Basic Service Charge per Month	\$ 28.80					\$ 28.80
	Commodity Charge per Therm:						
	All Usage	\$.23151	\$.62297	\$.02500	(\$.00091)		\$.87857
<u>NG-G2</u>	<u>General Gas Service - 2</u>						
	Basic Service Charge per Month	\$ 160.00					\$ 160.00
	Commodity Charge per Therm:						
	All Usage	\$.08670	\$.62297	\$.02500	(\$.00091)		\$.73376
<u>NG-G3</u>	<u>General Gas Service - 3</u>						
	Basic Service Charge per Month	\$ 350.00					\$ 350.00
	Commodity Charge per Therm:						
	All Usage	\$.02853	\$.62297	\$.02500	(\$.00091)		\$.67559
<u>NG-G4</u>	<u>General Gas Service - 4</u>						
	Basic Service Charge per Month	\$1,000.00					\$1,000.00
	Commodity Charge per Therm:						
	All Usage	\$.01258	\$.62297	\$.02500	(\$.00091)		\$.65964
	Demand Charge ^{5/}	\$.02400					\$.02400
<u>NG-AC</u>	<u>Air Conditioning Gas Service</u>						
	Basic Service Charge per Month	\$ 28.80					\$ 28.80
	Commodity Charge per Therm:						
	All Usage	\$.07918	\$.62297	\$.02500	(\$.00091)		\$.72624

<p>Issued:</p> <p align="center">November 30, 2017</p> <p>Effective:</p> <p align="center">January 1, 2018</p> <p>Advice Letter No.:</p> <p align="center">508</p>	<p>Issued by</p> <p>Justin Lee Brown</p> <p>Vice President</p>	
--	--	--

STATEMENT OF RATES
EFFECTIVE RATES APPLICABLE TO NORTHERN NEVADA SCHEDULES ^{1/2/}

Schedule Number	Description	Delivery Charge ^{3/}	Gas Cost			Currently Effective Tariff Rate
			Base Tariff Energy Rate ^{4/}	Deferred Energy Account Adjustment	Renewable Energy Program Rate	
NG-WP	<u>Water Pumping Gas Service</u>					
	Basic Service Charge per Month	\$ 36.00				\$ 36.00
	Commodity Charge per Therm:					
	All Usage	\$.12947	\$.62297	\$.02500	(\$.00091)	\$.77653
NG-EG	<u>Small Electric Generation Gas Service</u>					
	Basic Service Charge per Month	Otherwise Applicable Rate Schedule				
	Commodity Charge per Therm:					
	All Usage	\$.13130	\$.62297	\$.02500	(\$.00091)	\$.77836
NG-CNG	<u>Gas Service for Compression on Customer's Premises ^{6/}</u>					
	Basic Service Charge	\$ 25.80				\$ 25.80
	Commodity Charge per Therm:					
	All Usage	\$.10521	\$.62297	\$.02500	(\$.00091)	\$.75227
NG-L	<u>Street and Outdoor Lighting Gas Service</u>					
	Commodity Charge per Therm:					
	All Usage	\$.85348	\$.62297	\$.02500	(\$.00091)	\$ 1.50054
NG-OS	<u>Optional Gas Service</u>					
		As specified on Sheet Nos. 48 through 51.				
NG-AS	<u>Alternative Sales Service</u>					
		As specified on Sheet Nos. 52 through 53.				

^{1/} The charges shown above are subject to adjustments for taxes and assessments.

^{2/} Customers taking transportation service will pay the Basic Service Charge, the Delivery Charge per therm, and Demand Charge, if applicable, of the Currently Effective Tariff Rate for each meter included in the transportation service agreement, plus an amount of \$0.00024 per therm for distribution system shrinkage as defined in Rule No. 1 of this Nevada Gas Tariff for all volumes of gas not delivered through a direct connection to one of the Company's upstream interstate pipelines, the Conservation and Energy Efficiency rate of \$(0.00373) per therm, and a Transportation Service Charge of \$500.00 per month per individually qualifying premise. For purposes of calculating Payment for Excess Imbalances, the Imbalance Commodity Charge is \$0.28213 per therm and the Imbalance Reservation Charge is \$0.33552 per therm. For customers converting from sales service, an additional amount equal to the currently effective Deferred Energy Accounting Adjustment will be assessed for a period of twelve (12) months.

Issued:
November 30, 2017

Effective:
January 1, 2018

Advice Letter No.:
508

Issued by
Justin Lee Brown
Vice President

**SOUTHWEST GAS CORPORATION
SOUTHERN NEVADA**

PROPOSED ANNUALIZED CHANGE IN RATES AND REVENUE BY RATE SCHEDULE

Line No.	Description (a)	Rate Schedule (b)	Annual Number of Bills [1] (c)	Basic Service Charge (d)	Annual Volumes (Therms) [1] (e)	Currently Effective Rates [2] (f)	Proposed Tariff Rates (g)	Increase/ (Decrease) (h)	Total Revenue			
									Present (i)	Calculated (j)	Change (k)	Percent Change (l)
1	Single-Family Residential Gas Service	SG-RS	5,931,267	\$ 10.80	233,844,604	\$ 0.59745	\$ 0.62196	\$ 0.02451	\$ 64,057,684	\$ 64,057,684	\$ 0	0%
2	All Usage								139,709,998	145,441,529	5,731,531	2.8%
3	Total								\$ 203,767,682	\$ 209,499,213	\$ 5,731,531	2.8%
4	Multi-Family Residential Gas Service	SG-RM	1,430,305	\$ 9.00	32,105,733	\$ 0.57062	\$ 0.59513	\$ 0.02451	\$ 12,872,745	\$ 12,872,745	\$ 0	0%
5	All Usage								18,320,110	19,107,022	786,912	2.5%
6	Total								\$ 31,192,855	\$ 31,979,767	\$ 786,912	2.5%
7	Air Conditioning Residential Gas Service	SG-RAC	157	\$ 10.80	111,898	\$ 0.40463	\$ 0.42914	\$ 0.02451	\$ 1,696	\$ 1,696	\$ 0	0%
8	All Usage								45,277	48,020	2,743	5.8%
9	Total								\$ 46,973	\$ 49,715	\$ 2,743	5.8%
10	General Gas Service - 1	SG-G1	221,769	\$ 25.80	24,591,443	\$ 0.61534	\$ 0.63985	\$ 0.02451	\$ 5,721,640	\$ 5,721,640	\$ 0	0%
11	All Usage								15,132,050	15,734,786	602,736	2.9%
12	Total								\$ 20,853,690	\$ 21,456,427	\$ 602,736	2.9%
13	General Gas Service - 2	SG-G2	39,009	\$ 160.00	50,317,523	\$ 0.39748	\$ 0.42199	\$ 0.02451	\$ 6,241,440	\$ 6,241,440	\$ 0	0%
14	All Usage								20,000,110	21,233,392	1,233,282	4.7%
15	Total								\$ 26,241,550	\$ 27,474,832	\$ 1,233,282	4.7%
16	General Gas Service - 3	SG-G3	3,053	\$ 350.00	20,053,535	\$ 0.38080	\$ 0.40531	\$ 0.02451	\$ 1,068,550	\$ 1,068,550	\$ 0	0%
17	All Usage								7,636,347	8,127,859	491,512	5.6%
18	Total								\$ 8,704,897	\$ 9,196,409	\$ 491,512	5.6%
19	General Gas Service - 4	SG-G4	726	\$ 1,000.00	31,764,131	\$ 0.31029	\$ 0.33480	\$ 0.02451	\$ 726,000	\$ 726,000	\$ 0	0%
20	All Usage								9,856,030	10,634,568	778,539	3.8%
21	Demand				244,739,568	0.03950	0.03950	0.00000	9,667,213	9,667,213	0	0%
22	Total								\$ 20,249,243	\$ 21,027,781	\$ 778,539	3.8%
23	Air Conditioning Gas Service	SG-AC	48	\$ 0.00	16,313	\$ 0.34968	\$ 0.37419	\$ 0.02451	\$ 0	\$ 0	\$ 0	0%
24	General Gas Service - 1 (Seasonal)								5,704	6,104	400	4.7%
25	Summer				5,731	0.61534	0.63985	0.02451	3,527	3,667	140	1.5%
26	Winter								0	0	0	0%
27	General Gas Service - 2 (Seasonal)								7,834	8,383	549	4.7%
28	Summer				22,403	0.34968	0.37419	0.02451	3,722	3,951	229	2.5%
29	Winter				9,364	0.39748	0.42199	0.02451	335	335	0	0%
30	Air Conditioning Gas Service (2nd Meter Cooling)								0	0	0	0%
31	All Usage				135,951	\$ 0.34968	\$ 0.37419	\$ 0.02451	47,539	50,871	3,332	6.8%
32	Total								\$ 68,661	\$ 73,312	\$ 4,651	6.8%

[1] Number of Bills and Sales for the twelve months ended September 2017.

[2] Rates approved in Advice Letter No. 507 effective October 1, 2017.

**SOUTHWEST GAS CORPORATION
SOUTHERN NEVADA
PROPOSED ANNUALIZED CHANGE IN RATES AND REVENUE BY RATE SCHEDULE**

Line No.	Description (a)	Rate Schedule (b)	Annual Number of Bills [1] (c)	Basic Service Charge (d)	Annual Volumes (Therms) [1] (e)	Currently Effective Rates [2] (f)	Proposed Tariff Rates (g)	Increase/ (Decrease) (h)	Total Revenue			
									Present (i)	Calculated (j)	Change (k)	Percent Change (l)
33	Water Pumping Gas Service	SG-WP	12	\$ 250.00					\$ 3,000	\$ 3,000		
34	All Usage				667,386	\$ 0.40348	\$ 0.42799	\$ 0.02451	269,276	285,633		
35	Total								<u>272,276</u>	<u>288,633</u>	\$ 16,358	6.0%
36	Small Electric Generation Gas Service	SG-EG	0	\$ 0.00	0	\$ 0.34968	\$ 0.37419	\$ 0.02451	0	0	0	0.0%
37	All Usage								0	0	0	0.0%
38	Total								<u>0</u>	<u>0</u>	<u>0</u>	<u>0.0%</u>
39	Gas Service for Compression on Customer's Premises	SG-CNG	44	\$ 25.80					1,135	1,135		
40	Residential Basic Service Charge		12	\$ 10.80					130	130		
41	All Usage				650,367	\$ 0.38731	\$ 0.41182	\$ 0.02451	251,892	267,833		
42	Total								<u>253,157</u>	<u>269,098</u>	\$ 15,940	6.3%
43	Street and Outdoor Lighting Gas Service	SG-L	8,250									
44	All Usage				413,323	\$ 0.60551	\$ 0.63002	\$ 0.02451	250,270	260,401		
45	Total								<u>250,270</u>	<u>260,401</u>	\$ 10,131	4.0%
46	Total Sales		<u>7,634,775</u>		<u>394,709,705</u>				<u>\$ 311,901,253</u>	<u>\$ 321,575,588</u>	<u>\$ 9,674,335</u>	<u>3.1%</u>

[1] Number of Bills and Sales for the twelve months ended September 2017.

[2] Rates approved in Advice Letter No. 507 effective October 1, 2017.

**SOUTHWEST GAS CORPORATION
NORTHERN NEVADA
PROPOSED ANNUALIZED CHANGE IN RATES AND REVENUE BY RATE SCHEDULE**

Line No.	Description (a)	Rate Schedule (b)	Annual Number of Bills [1] (c)	Basic Service Charge (d)	Annual Volumes (Therms) [1] (e)	Currently Effective Rates [2] (f)	Proposed Tariff Rates (g)	Increase/ (Decrease) (h)	Total Revenue			Line No.
									Present (i)	Proposed (j)	Change (k)	
1	Single-Family Residential Gas Service	NG-RS	849,741	\$ 10.80	53,538,912	\$ 0.92975	\$ 0.95574	\$ 0.02599	\$ 9,177,203	\$ 9,177,203	\$	1
2	All Usage								49,777,803	51,169,280		2
3	Total								\$ 58,955,006	\$ 60,346,483	\$ 1,391,476	2.4%
4	Multi-Family Residential Gas Service	NG-RM	187,841	\$ 10.80	6,683,833	\$ 0.96110	\$ 0.98709	\$ 0.02599	\$ 2,028,683	\$ 2,028,683		4
5	All Usage								6,423,832	6,597,545		5
6	Total								\$ 8,452,515	\$ 8,626,228	\$ 173,713	2.1%
7	Air Conditioning Residential Gas Service	NG-RAC	36	\$ 10.80	2,743	\$ 0.89120	\$ 0.91719	\$ 0.02599	\$ 389	\$ 389		7
8	All Usage								2,445	2,516		8
9	Total								\$ 2,833	\$ 2,905	\$ 71	2.5%
10	General Gas Service - 1	NG-G1	91,578	\$ 28.80	11,274,958	\$ 0.85258	\$ 0.87857	\$ 0.02599	\$ 2,637,446	\$ 2,637,446		10
11	All Usage								9,612,804	9,905,840		11
12	Total								\$ 12,250,250	\$ 12,543,286	\$ 293,036	2.4%
13	General Gas Service - 2	NG-G2	9,388	\$ 160.00	12,877,596	\$ 0.70777	\$ 0.73376	\$ 0.02599	\$ 1,502,080	\$ 1,502,080		13
14	All Usage								9,114,376	9,449,065		14
15	Total								\$ 10,616,456	\$ 10,951,145	\$ 334,689	3.2%
16	General Gas Service - 3	NG-G3	883	\$ 350.00	6,015,103	\$ 0.64960	\$ 0.67559	\$ 0.02599	\$ 309,050	\$ 309,050		16
17	All Usage								3,907,411	4,063,743		17
18	Total								\$ 4,216,461	\$ 4,372,793	\$ 156,333	3.7%
19	General Gas Service - 4	NG-G4	195	\$ 1,000.00	6,237,781	\$ 0.63365	\$ 0.65964	\$ 0.02599	\$ 195,000	\$ 195,000		19
20	All Usage								3,952,570	4,114,690		20
21	Demand				28,993,188	0.02400	0.02400	0.00000	695,837	695,837		21
22	Total								\$ 4,843,406	\$ 5,005,526	\$ 162,120	3.3%
23	Air Conditioning Gas Service	NG-AC	0	\$ 0.00	4,682	\$ 0.70025	\$ 0.72624	\$ 0.02599	\$ 0	\$ 0		23
24	Basic Service Charge		12	\$ 28.80					346	346		24
25	All Usage								3,279	3,400		25
26	Total								\$ 3,624	\$ 3,746	\$ 122	3.4%

[1] Number of Bills and Sales for the twelve months ended September 2017.

[2] Rates approved in Advice Letter No. 507 effective October 1, 2017.

**SOUTHWEST GAS CORPORATION
NORTHERN NEVADA
PROPOSED ANNUALIZED CHANGE IN RATES AND REVENUE BY RATE SCHEDULE**

Line No.	Description (a)	Rate Schedule (b)	Annual Number of Bills [1] (c)	Basic Service Charge (d)	Annual Volumes (Therms) [1] (e)	Currently Effective Rates [2] (f)	Proposed Tariff Rates (g)	Increase/ (Decrease) (h)	Total Revenue			Percent Change (i)
									Present (i)	Proposed (j)	Change (k)	
27	Water Pumping Gas Service	NG-WP	24	\$ 36.00	4,559	\$ 0.75054	\$ 0.77653	\$ 0.02599	\$ 864	\$ 864	\$	
28	All Usage								3,422	3,540		
29	Total								<u>4,286</u>	<u>4,404</u>	<u>\$ 118</u>	<u>2.8%</u>
30	Small Electric Generation Gas Service								\$ 1,037	\$ 1,037	\$	
31	General Gas Service - 1 (NG-EG)	NG-EG	36	\$ 28.80					1,920	1,920		
32	General Gas Service - 2 (NG-EG)		12	\$ 160.00	34,241	\$ 0.75237	\$ 0.77836	\$ 0.02599	25,762	26,652		
33	All Usage								<u>28,719</u>	<u>29,609</u>	<u>\$ 890</u>	<u>3.1%</u>
34	Total											
34	Gas Service for Compression on Customer's Premises								\$ 439	\$ 439	\$	
35	Residential Basic Service Charge	NG-CNG	17	\$ 25.80	18	\$ 0.72628	\$ 0.75227	\$ 0.02599	13	14		
36	All Usage								<u>452</u>	<u>452</u>	<u>\$ 0</u>	<u>0.0%</u>
37	Total											
38	Street and Outdoor Lighting Gas Service	NG-L	641		21,323	\$ 1.47455	\$ 1.50054	\$ 0.02599	\$ 31,442	\$ 31,996	\$ 554	1.8%
39	All Usage								<u>31,442</u>	<u>31,996</u>	<u>\$ 554</u>	<u>1.8%</u>
40	Total											
41	Total Sales				<u>96,695,749</u>				<u>\$ 99,405,450</u>	<u>\$ 101,918,572</u>	<u>\$ 2,513,122</u>	<u>2.5%</u>

[1] Number of Bills and Sales for the twelve months ended September 2017.

[2] Rates approved in Advice Letter No. 507 effective October 1, 2017.



Quarterly Gas Cost Rate Adjustment—Southern Nevada

Effective January 1, 2018, Southwest Gas Corporation is adjusting rates to reflect changes in the quarterly Gas Cost rate for Southern Nevada customers. The rate is composed of the Base Tariff Energy Rate (BTER) and the Deferred Energy Account Adjustment (DEAA). This rate is updated quarterly to account for changes in the cost of gas the Company purchased on behalf of its customers, with no profit to the Company.

The transactions and recorded cost of natural gas which are the basis for the quarterly rate adjustment will be reviewed for reasonableness and prudence in the next Annual Rate Adjustment proceeding. The result of this quarterly rate adjustment is an increase in annualized revenue of \$9,674,335 or 3.1%.

The table on the back of this notice shows the change in an average monthly bill for each rate schedule. The change to individual customer bills will vary depending on the amount of gas consumed.

SW5758-SNV (11/2017)



Quarterly Gas Cost Rate Adjustment—Northern Nevada

Effective January 1, 2018, Southwest Gas Corporation is adjusting rates to reflect changes in the quarterly Gas Cost rate for Northern Nevada customers. The rate is composed of the Base Tariff Energy Rate (BTER) and the Deferred Energy Account Adjustment (DEAA). This rate is updated quarterly to account for changes in the cost of gas the Company purchased on behalf of its customers, with no profit to the Company.

The transactions and recorded cost of natural gas which are the basis for the quarterly rate adjustment will be reviewed for reasonableness and prudence in the next Annual Rate Adjustment proceeding. The result of this quarterly rate adjustment is an increase in annualized revenue of \$2,513,122 or 2.5%.

The table on the back of this notice shows the change in an average monthly bill for each rate schedule. The change to individual customer bills will vary depending on the amount of gas consumed.

SW5757-NNV (11/2017)

